



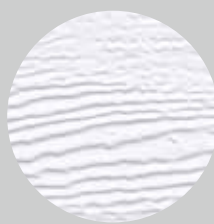
RenoMatic sectional garage door and operator

Available in the surfaces Woodgrain, Planar, Decocolor and Duragrain Diamond

HÖRMANN

M-ribbed Woodgrain / Decocolor

The subtle section ribbing and structured / painted surface finish characterise the M-ribbed RenoMatic sectional garage door.



The Woodgrain surface finish is characterised by its authentic saw pattern and robustness. (Figure on left in RAL 9016, Traffic white)



The painted **Decocolor surface finish** impresses with a natural timber look in 3 decors (Figure on left in Golden Oak decor). It does not match the appearance of the Decograin surface finish of Hörmann entrance doors.



RAL 9016,
Traffic white



RAL 9006,
White aluminium



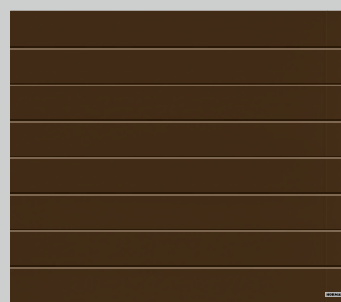
RAL 9007,
Grey aluminium



CH 703,
Anthracite metallic



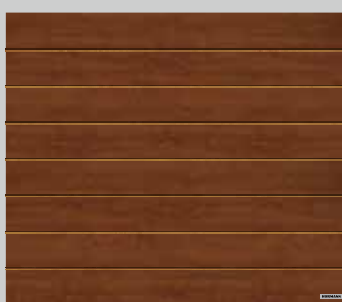
RAL 7016,
Anthracite grey



RAL 8028,
Terra brown



Decocolor
Golden Oak decor



Decocolor
Dark Oak decor

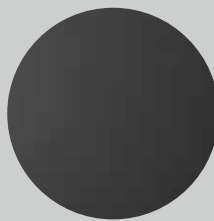


Decocolor
Night Oak decor



L-ribbed Planar / Decocolor

The L-ribbed RenoMatic sectional garage door impresses with a large section division and a modern matt door appearance in Matt deluxe colours as well as in natural timber designs.



The smooth **Planar surface finish** in the 6 exclusive Hörmann Matt deluxe colours convinces with its fine elegance. (Figure on left in CH 703, Matt deluxe, Anthracite metallic)



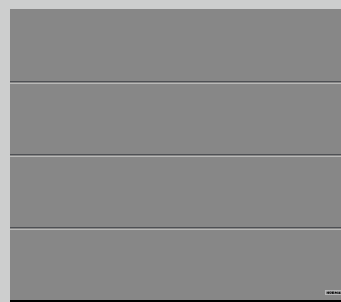
The painted **Decocolor surface finish** impresses with a natural timber look in 3 decors (Figure on left in Golden Oak decor). It does not match the appearance of the Decograin surface finish of Hörmann entrance doors.



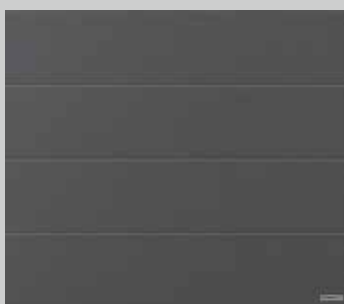
CH 9016 Matt deluxe,
Traffic white



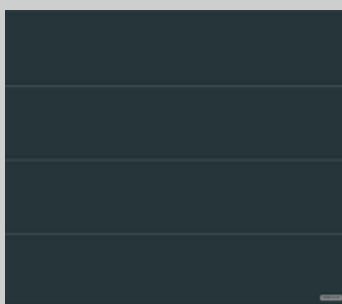
CH 9006 Matt deluxe,
White aluminium



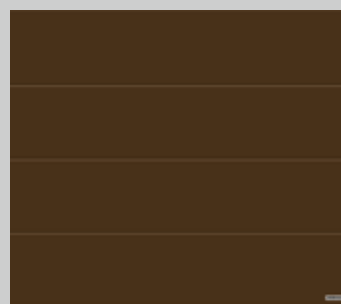
CH 9007 Matt deluxe,
Grey aluminium



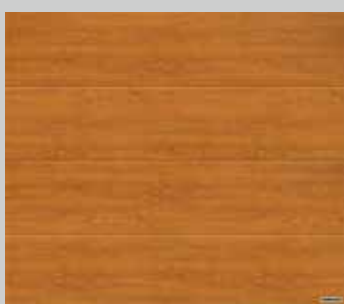
CH 703 Matt deluxe,
Anthracite metallic



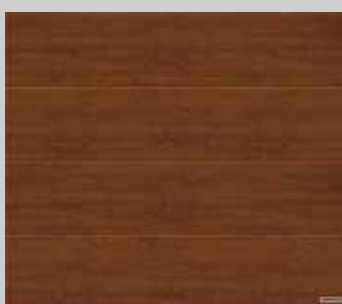
CH 7016 Matt deluxe,
Anthracite grey



CH 8028 Matt deluxe,
Terra brown



Decocolor
Golden Oak decor



Decocolor
Dark Oak decor



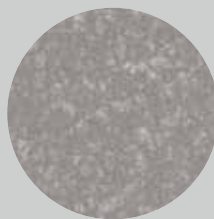
Decocolor
Night Oak decor

► Sectional garage door RenoMatic, L-ribbed Planar in CH 703 Matt deluxe, Anthracite metallic



L-ribbed Duragrain

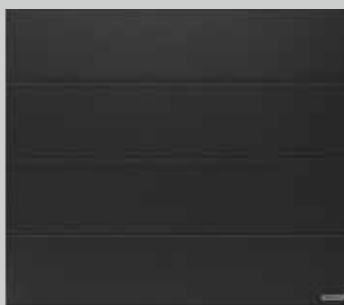
The L-ribbed RenoMatic sectional garage door features a Duragrain surface finish especially resistant to scratches and dirt as well as a large section division.



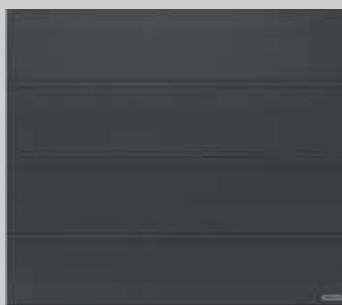
The smooth Duragrain surface finish in 8 modern colours ensures your door will maintain its beautiful appearance. (Figure on left in Diamond Stone)



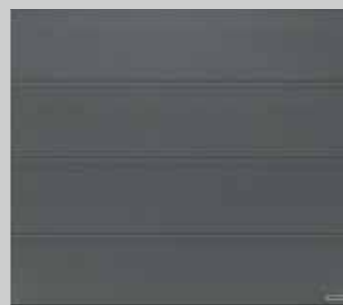
The final coating of high-strength protective paint is especially robust, scratch-resistant and stain-resistant.



Diamond Black



Diamond Anthracite



Diamond Basalt



Diamond Stone



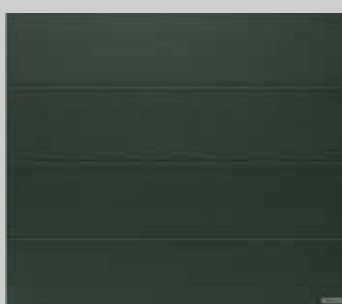
Diamond Grey



Diamond Brown



Diamond Red

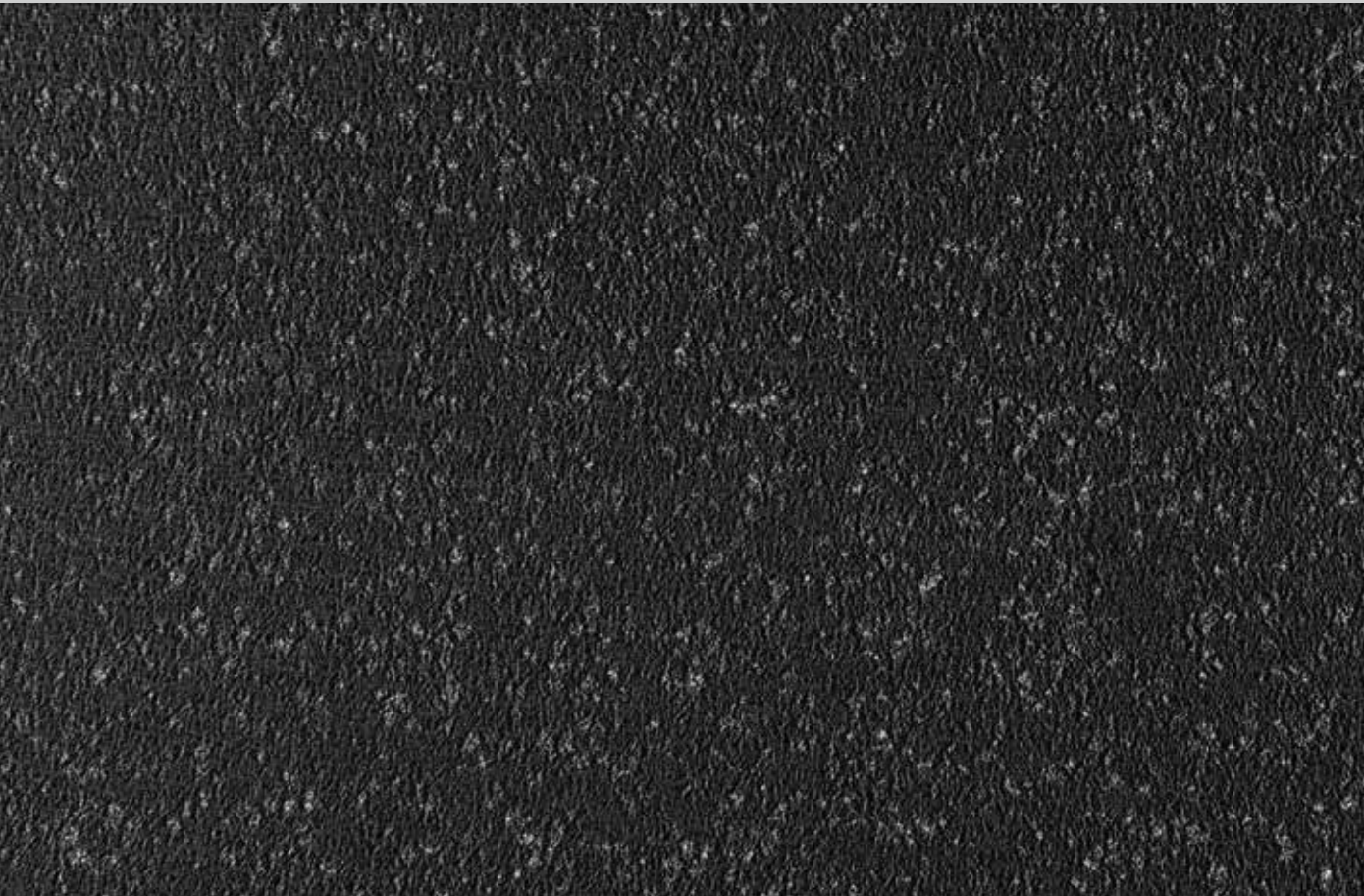


Diamond Green

The colours and surface finishes shown are subject to the limitations of the printing process and cannot be regarded as binding. Please consult with your local Hermann specialised dealer.

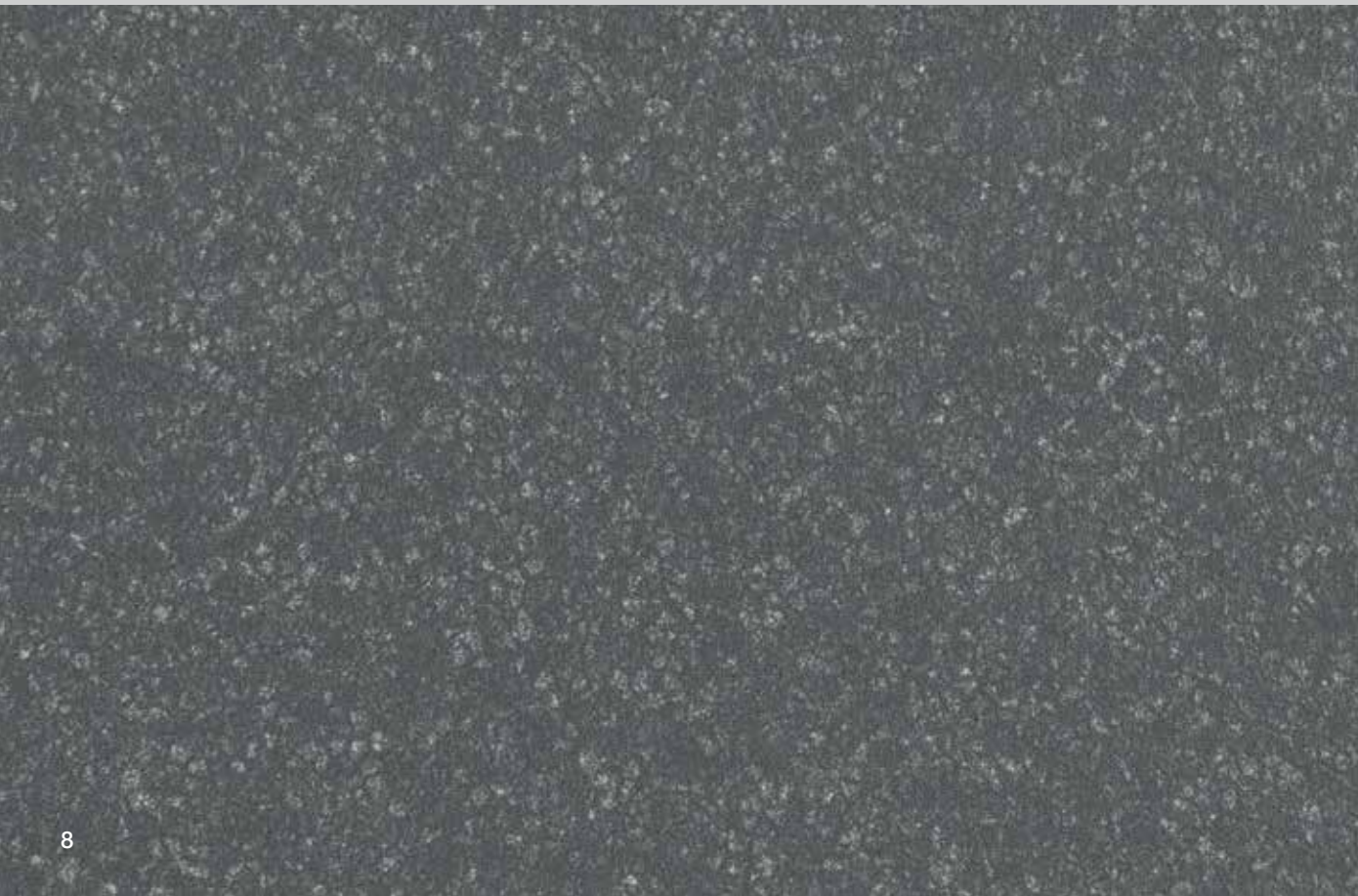


Duragrain Diamond Black



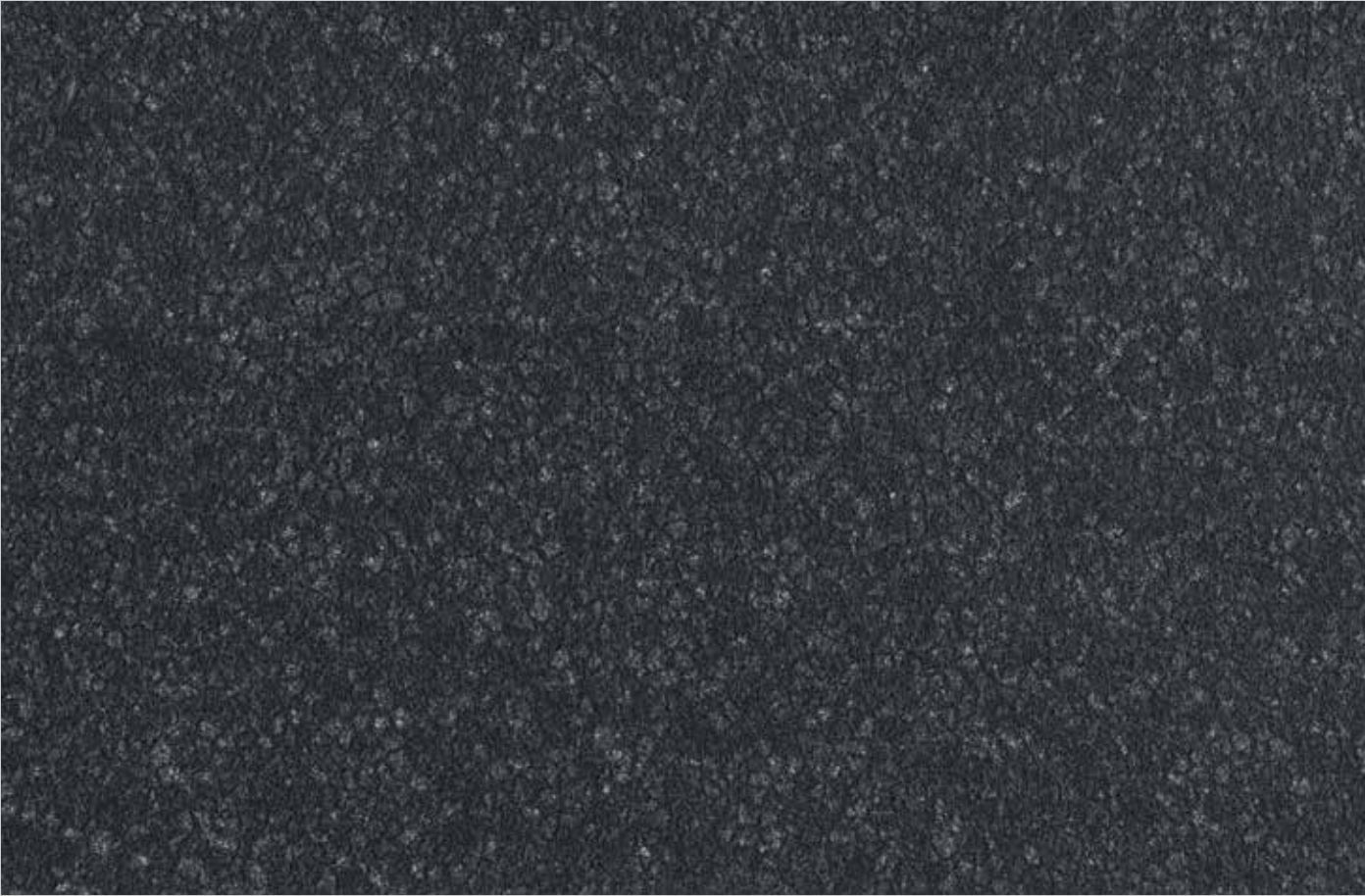
Fascia panels or optional frame coverings
in matching colour

Duragrain Diamond Basalt



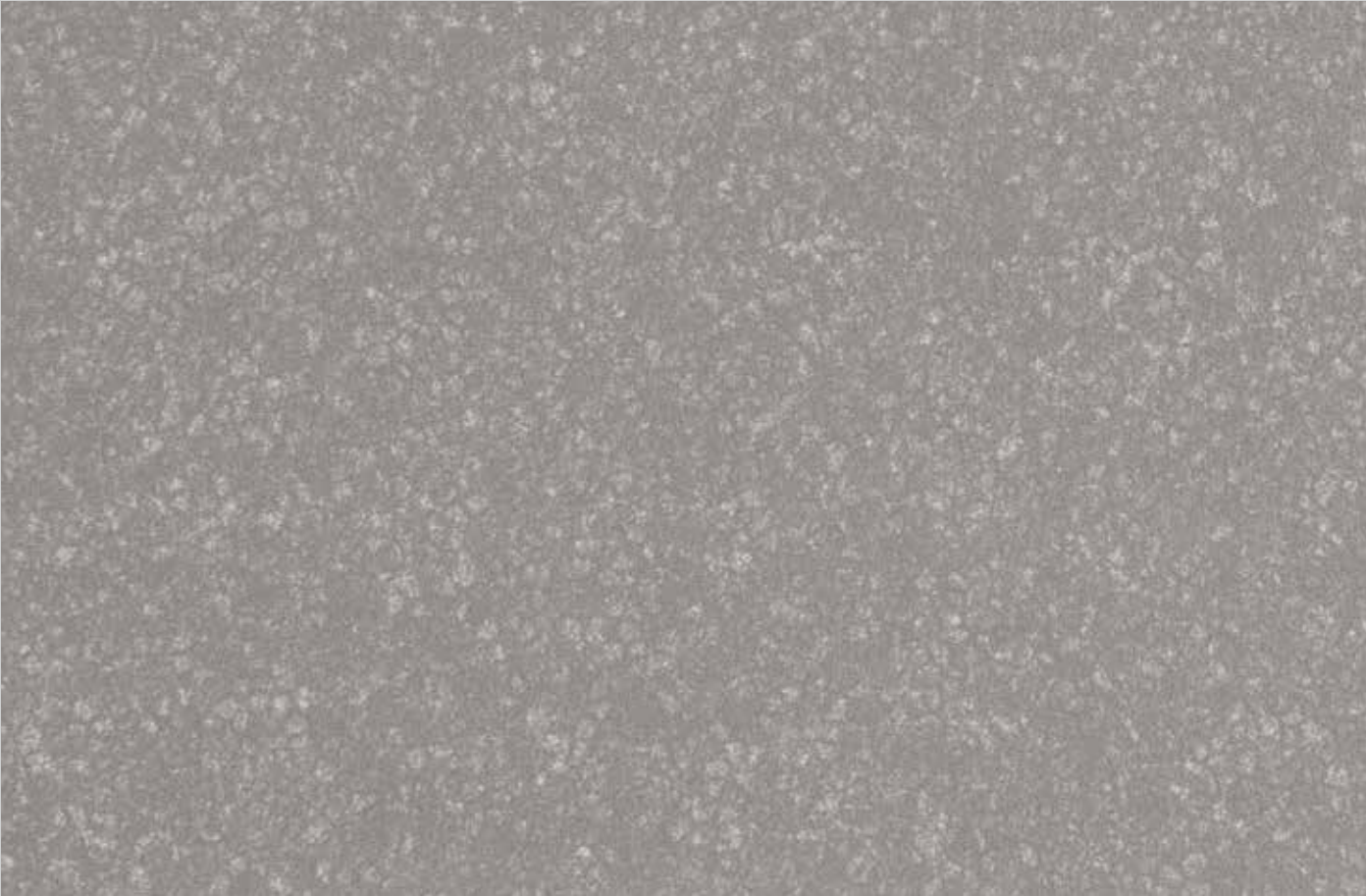
Fascia panels or optional frame coverings
in matching colour

Duragrain Diamond Anthracite



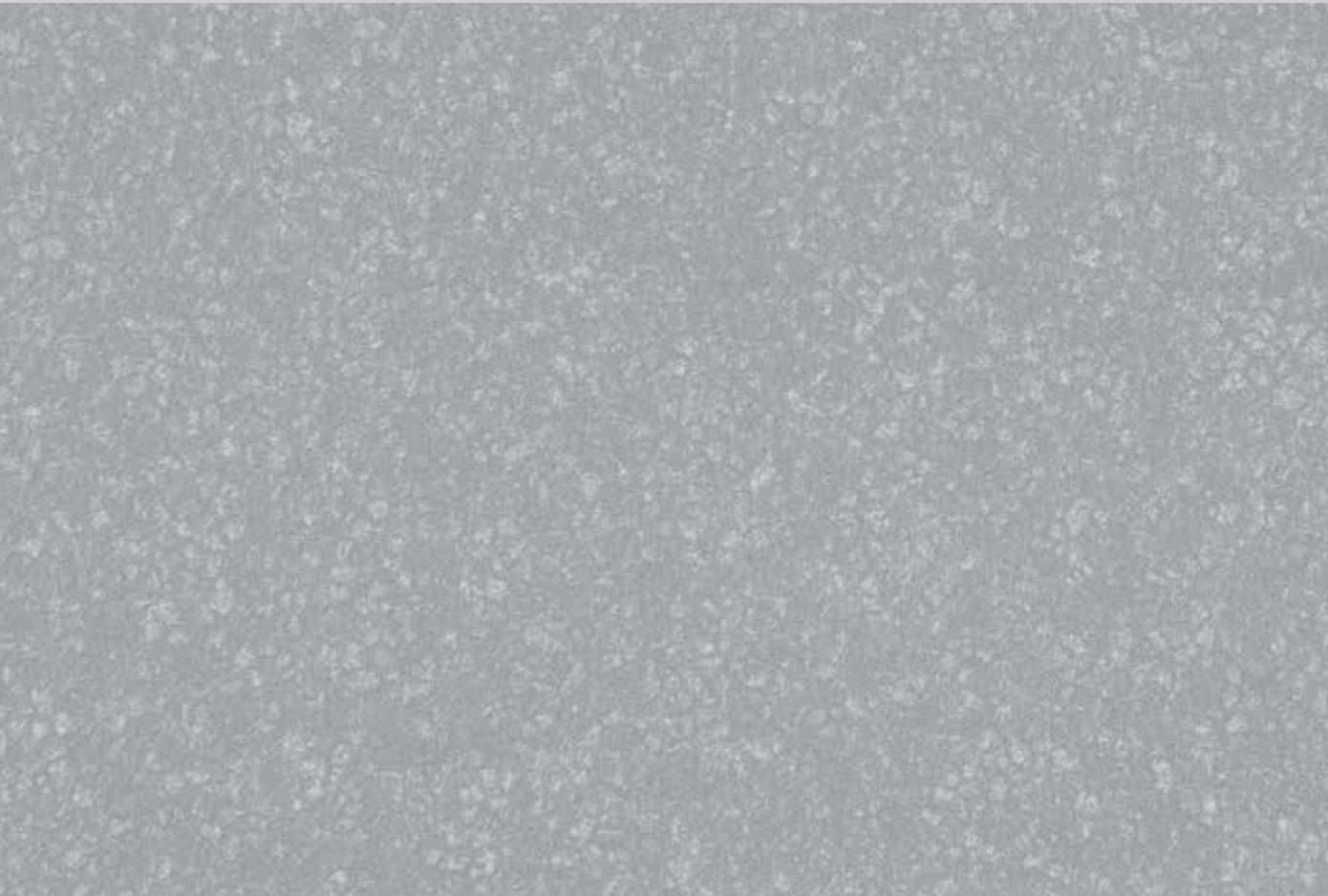
Fascia panels or optional frame coverings
in matching colour

Duragrain Diamond Stone



Fascia panels or optional frame coverings
in matching colour

Duragrain Diamond Grey



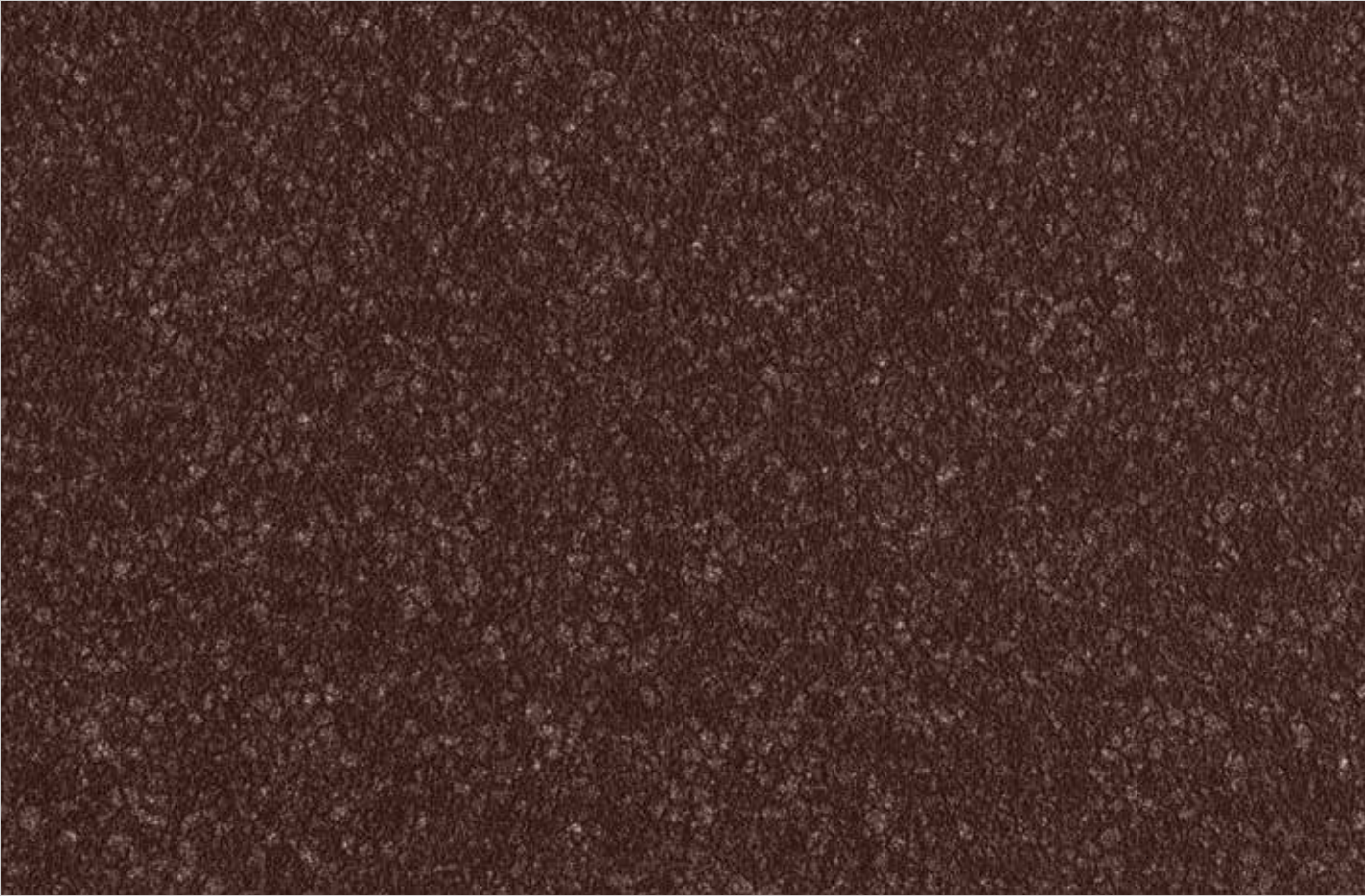
Fascia panels or optional frame coverings
in matching colour

Duragrain Diamond Red



Fascia panels or optional frame coverings
in matching colour

Duragrain Diamond Brown



Fascia panels or optional frame coverings
in matching colour

Duragrain Diamond Green



Fascia panels or optional frame coverings
in matching colour

Quality from Europe's no. 1 makes all the difference.



Good thermal insulation

The RenoMatic sectional garage door is double-skinned and insulated. The door travel is pleasantly quiet thanks to the 42 mm thick sections. The sections have a polyester-primer coating on the outside **1**. We supply the inside of the sections in silver-coloured galvanization **2**. The torsion spring assembly with the patented spring-in-spring system or the torsion spring with tested spring safety device protects the door leaf against falling. Thanks to the good thermal insulation, the doors are an excellent choice if your garage is directly attached to the house or if there is access from the garage to the house.



Optimum long-term protection

A non-brittle, 4 cm plastic frame shoe **3** offers long-term protection against corrosion of your door, even with waterlogging, which is unmatched by competitor solutions. The frame shoe completely covers the frame in the area susceptible to rust. Only this offers true long-term protection.



Matching appearance

The harmonious overall impression of a door is created by many little details. For example, we always supply doors with Woodgrain, Planar or Decocolor surface finish with the fascia panel **4** matching the door colour. Duragrains doors come with the fascia panel in Traffic white RAL 9016 as standard. It is optionally available in a colour matching the decor. The side frames **5** are always in a Woodgrain surface finish, coated in Traffic white RAL 9016 (matching the white surface for M-ribbed doors). Optional frame coverings are available in the surface finish of the door for doors with Planar surface finish. For doors with Decocolor or Duragrains surface finish, we optionally supply the frame cladding in a colour that matches the decor.



Only from Hörmann

- Plastic frame shoe
- Mechanical anti-lift kit in the operator boom
- Radio system BiSecur

Automatic comfort

The RenoMatic comes with the operator **ProMatic 1** and **two 4-button hand transmitters HSE 4 BS as standard**. On request, the **SupraMatic E 2** is also available at a surcharge **for faster, smarter door opening**. The patented, rail-mounted operator technology of both operators ensures smooth and quiet door travel. On encountering an obstruction, the reliable automatic safety cut-out stops the door.

BiSecur radio system with certified security



The bi-directional BiSecur radio system is based on **future-oriented technology** for the convenient and secure operation of garage and entrance gate operators, door operators, lights and more. This extremely secure BiSecur encryption protocol, developed by Hörmann, with a stable, interference-free range makes sure that no one can copy your radio signal. It was tested and certified by security experts at Bochum University.

Safe operation

Hörmann sectional doors are tested and certified in accordance with the high safety requirements of European standard 13241, not only on their own but also in combination with Hörmann operators. It would be hard to find a safer sectional door.



Now with Secured by Design as Standard

Apart from doors and windows, burglars often try to break in through the garage door to enter the house via a connecting door or to steal items from the garage. Now, as with all insulated sectional garage doors, RenoMatic comes with Secured by Design as standard*. You won't find a more secure sectional garage door on the market. Speak to your Hörmann distributor and get your door registered today!



Secured by Design



Official Police Security Initiative

* This applies to all insulated sectional doors that are registered at Hörmann UK and are unmodified, fitted behind the opening and are combined with a Hörmann operator. The accreditation is for doors that have been fitted after 01.05.2021 only.

Matching side doors

You can also select matching side doors with narrow aluminium profiles to go with the sectional garage door RenoMatic. The door infills are perfectly matched to the door style as well as the surface and colour. This results in a harmonious overall appearance for the door and side door.



23 door sizes for almost any opening

Door heights in mm	2250									
	2125									
	2000									
	2134	2286	2375	2500	2750	3000	3500	4000	4267	5000
Door widths in mm										



Good for our environment Security for a more beautiful home

Climate-neutral doors from Europe's No. 1

We use 100% green electricity in the production of our promotional doors and additionally save several thousand tons of CO² through many other measures. We compensate for the remaining emissions by supporting climate protection projects in collaboration with ClimatePartner.

You can find further information at www.hoermann.de/umwelt



HÖRMANN