



NEW: Fire protection curtain FlexFire

Textile fire protection for construction projects
and industrial buildings for inconspicuous integration

E30 E60 E90 E120

HÖRMANN

Hörmann brand quality

Reliable and oriented towards the future



ThyssenKrupp Quartier in Essen with Hörmann products



High-speed progress

Growing and constantly changing functional and safety requirements necessitate continuous new construction and equipment developments and improvements, especially when it comes to moveable construction components such as doors. In this area, our qualified development teams time and again prove their great specialised expertise.



Highly sophisticated production methods

Hörmann relies on state-of-the-art production technology at highly specialised factories. Computer-controlled operations ensure dimensionally accurate elements with perfectly fitted fittings and functional parts.



As Europe's leading manufacturer of doors and frames, we are committed to high product and service quality. This is how we set standards on an international scale.

Highly-specialised factories develop and manufacture construction components that are marked by excellent quality, functional safety and a long service life.

Our presence in the global economy's key regions makes us a strong, future-oriented partner for industrial and public construction projects.



Fire testing centre with test laboratory

Our new and further developments are constantly tested for the required fire resistance and smoke-tightness through in-house fire tests at our fire testing centre. The knowledge gained from these tests ensures high fire protection for buildings. They also allow us to optimally prepare our innovations for the official inspections by accredited testing centres for official approvals.



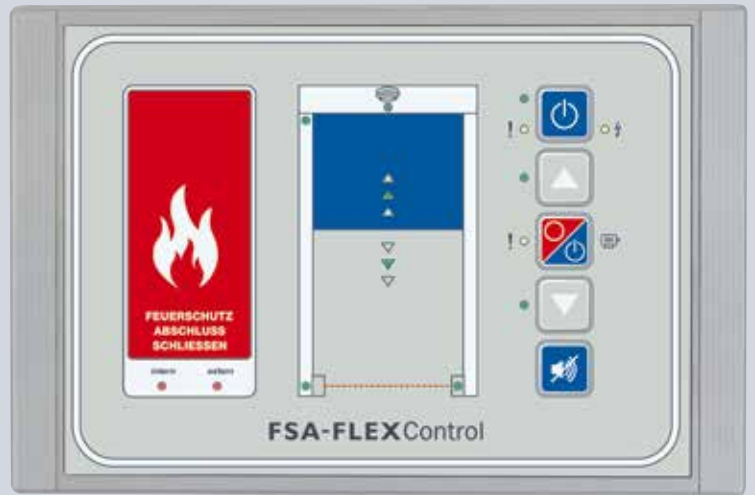
Expert building support

Experienced specialists within our customer-oriented sales organisation accompany you from the planning stage, through technical clarification up to the final building inspection.

Expert fitting is guaranteed by experienced Hörmann fitters and the specialised trained staff of Hörmann's partners.

Good reasons to try Hörmann

Fire protection curtain for construction and industry



1

Space-saving construction

Narrow side guides with dimensions of 115 × 75 mm ensure that the textile fire protection curtain **remains inconspicuous** and can thus be adapted to the geometry of the building. A space-saving shaft housing with integrated tubular drive enables fitting in a suspended ceiling, allowing the entire construction to be integrated **almost invisibly** into the existing architecture.

2

Reliable control unit

The textile fire protection curtain FlexFire is equipped as standard with the FSA-FLEXControl hold-open device control to ensure the curtain **closes reliably** if smoke develops during a fire. When combined with optical or thermal fire detectors that monitor the door area, this hold-open device complies with the requirements of EN 14637. It can also be connected to the fire alarm system on site.

NEW
**Fully automatic teach-in
run as standard**



3

**Fast
fitting**

As standard, we supply the textile fire protection curtain FlexFire with concealed magnetic contacts already fitted in the side guide. The door shaft also comes with the tubular drive fitted at the factory. In combination with the control unit FSA-FLEXControl and the line-monitored tubular drive, the system performs a fully automatic teach-in run. Preassembled wiring makes the door system **very easy to fit and service**.

4

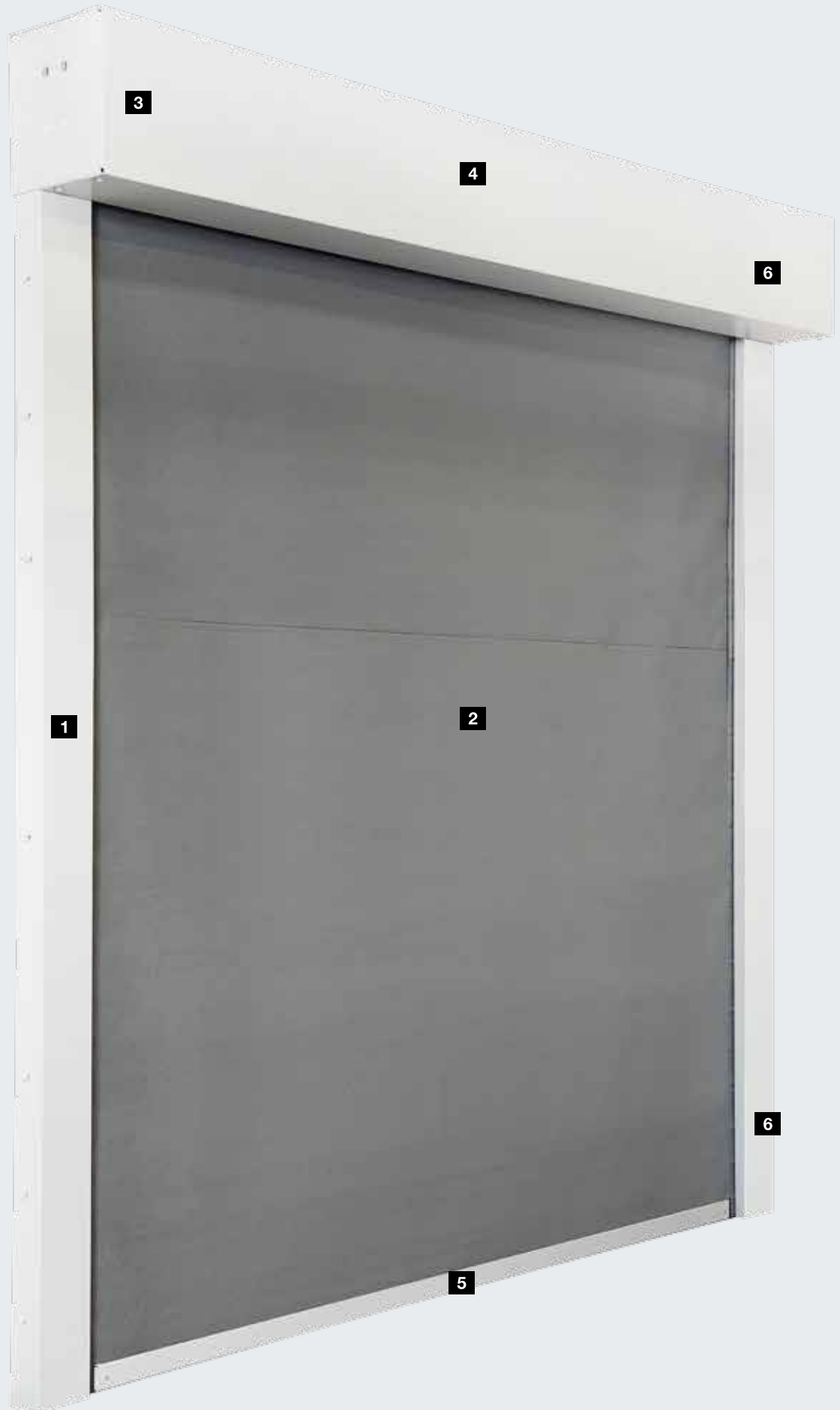
**Custom
surface finishes**

The side guide, shaft cover, and bottom strip come in galvanized steel as standard. We also offer the components in RAL to choose or in special colours to **match** your design.

Quality in the details

Fire protection curtains with intelligent control unit

- E30
- E60
- E90
- E120



1 Side guides

- Two-part side guide
- Optional in RAL to choose

2 Textile curtain

- Grey glass filament fabric reinforced with V4 A wire
- for fire loads of up to 120 min.
- Low weight and small space requirement

3 Shaft cover

- Visible or concealed in the suspended ceiling, depending on the fitting situation

4 Integrated tubular drive

- Smooth, quiet door travel
- Preassembled wiring

5 Bottom strip

- Solid bottom strip serves as a closing weight to mechanically close the door in case of a power failure, if smoke is detected, or if triggered / operated by hand

6 Magnetic contact unit

- Concealed magnetic contacts as standard
- Invisibly integrated in the side guide
- Automatic teach-in in combination with control unit FSA-FlexControl

7 Control unit FSA-FLEXControl

- Up to 20 fire detectors can be connected
- Complies with DiBt regulations
- Fully automatic teach-in run
- Membrane keypad with integrated manual release button
- Signal exchange possible for building control technology
- Possible connections: one motor-driven opening aid, 2 magnets, 3 limit switches, 2 photocells, horn / flashing light, 2 safety contact strips, external hand transmitter and radio receiver for opening / closing, radio fire detector



Automatic safety in the event of fire

Hörmann hold-open device

Acoustic and visual / acoustic alarm system **1**

In addition to the standard alarm system with only an acoustic signal – already included in the FSA-FLEXControl – an optional variant is available with both a visual and acoustic signal in accordance with DIN EN 14600. This visual / acoustic flashing light is controlled by the FSA-OAW control (see illustration) in conjunction with the FSA-FLEXControl.



Visual fire detector H-RM-4070 **2**

The visual fire detector works according to the familiar scattered light principle. The remarkable flat design of the fire detector allows smoke detection across a wide range of fires. The sensor compartment contains a visual sensor capable of measuring both reflected and normal scattered light. The stability of the detector is further enhanced by the use of algorithms that decide when the detector changes to alarm status. This reduces the likelihood of the alarm being triggered by smoke without a real source of fire. The detector is approved in accordance with EN54-7.



Thermal detector H-TM-4070 **3**

The thermal detector H-TM-4070 measures the ambient temperature every two seconds. A microprocessor stores the temperature measurement data and compares it to the preset limits to determine if a preset maximum value – the alarm threshold – has been reached. The detector is approved in accordance with EN54-7.



Sizes, main functions and additional functions

FlexFire

Main function

Partition

E30

E60

E90

E120

Fire protection curtain FlexFire

Dimensions

E30 partition

Width (mm)

1000 – 5000

Height (mm)

2000 – 5000

E60 partition

Width (mm)

1000 – 5000

Height (mm)

2000 – 5000

E90 partition

Width (mm)

1000 – 5000

Height (mm)

2000 – 5000

E120 partition

Width (mm)

1000 – 5000

Height (mm)

2000 – 5000

Opening and closing speed

Opening (s/m)

12

Closing (s/m)

6

Fabric

Weight, approx. (g/m²)

700

Thickness, approx. (mm)

0,5

Side guide

Material / surface: galvanized steel, optionally in RAL to choose

Dimensions W × H (mm)

115 × 70

Shaft housing

Material / surface: galvanized steel, optionally in RAL to choose

Dimensions W × H (mm): for curtain height ≤ 3500 mm

250 × 283

Dimensions W × H (mm): for curtain height > 3500 mm

300 × 320

Notice

Larger door widths and door heights are possible on request.

Important

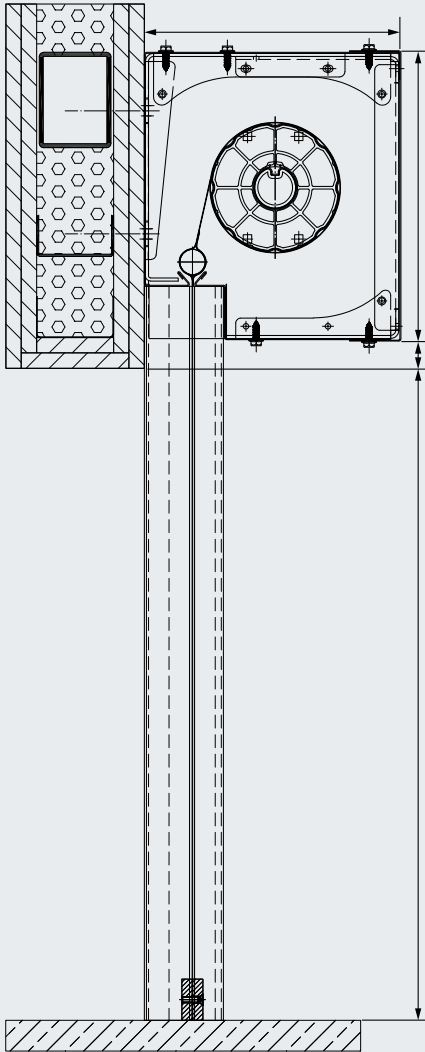
Partition E30, E60, E90, E120

Partition “E” is the capability of a component with a partitioning function to resist a fire on one side in such a manner as to prevent the fire from spreading to the side not exposed to the fire for 30, 60, 90 or 120 minutes.

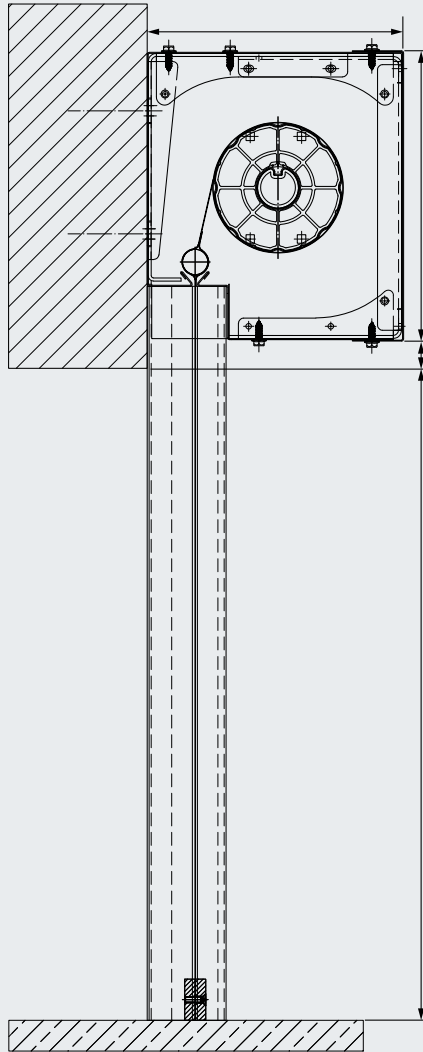
Fitting data

Vertical and horizontal views

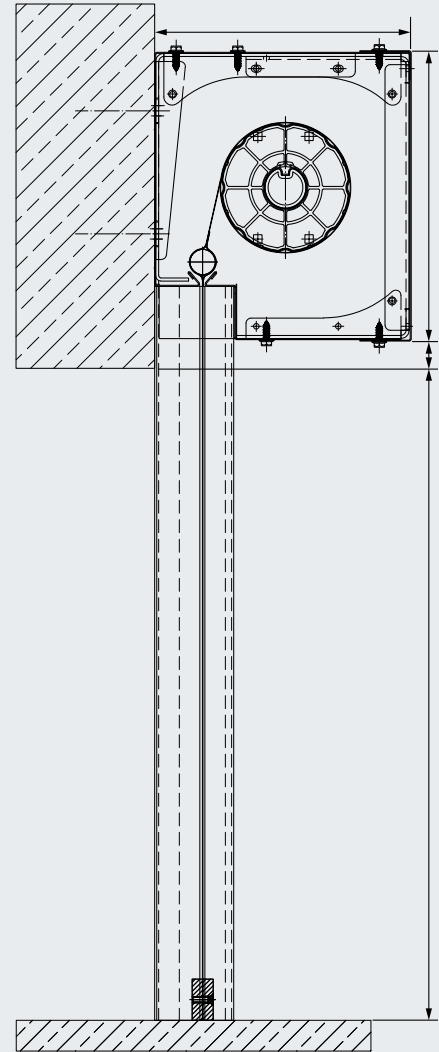
Shaft housing fitting types



Wall fitting (partition wall)

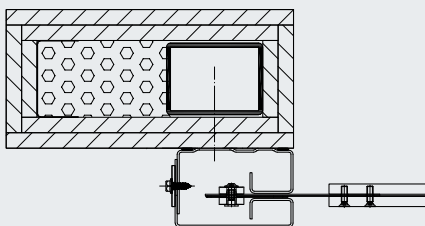


Wall fitting (brickwork, gas concrete)

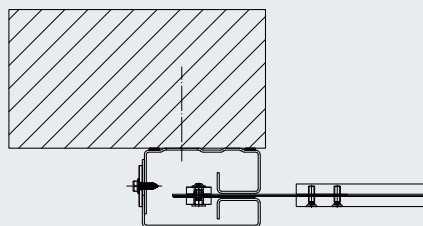


Wall fitting (concrete)

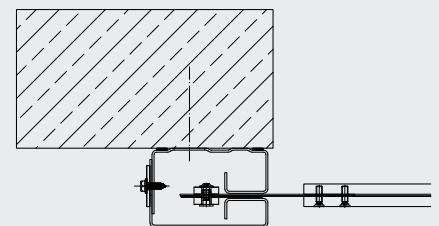
Side guide fitting types



Fitting in front of the reveal
(partition wall)



Fitting in front of the reveal
(brickwork, gas concrete)



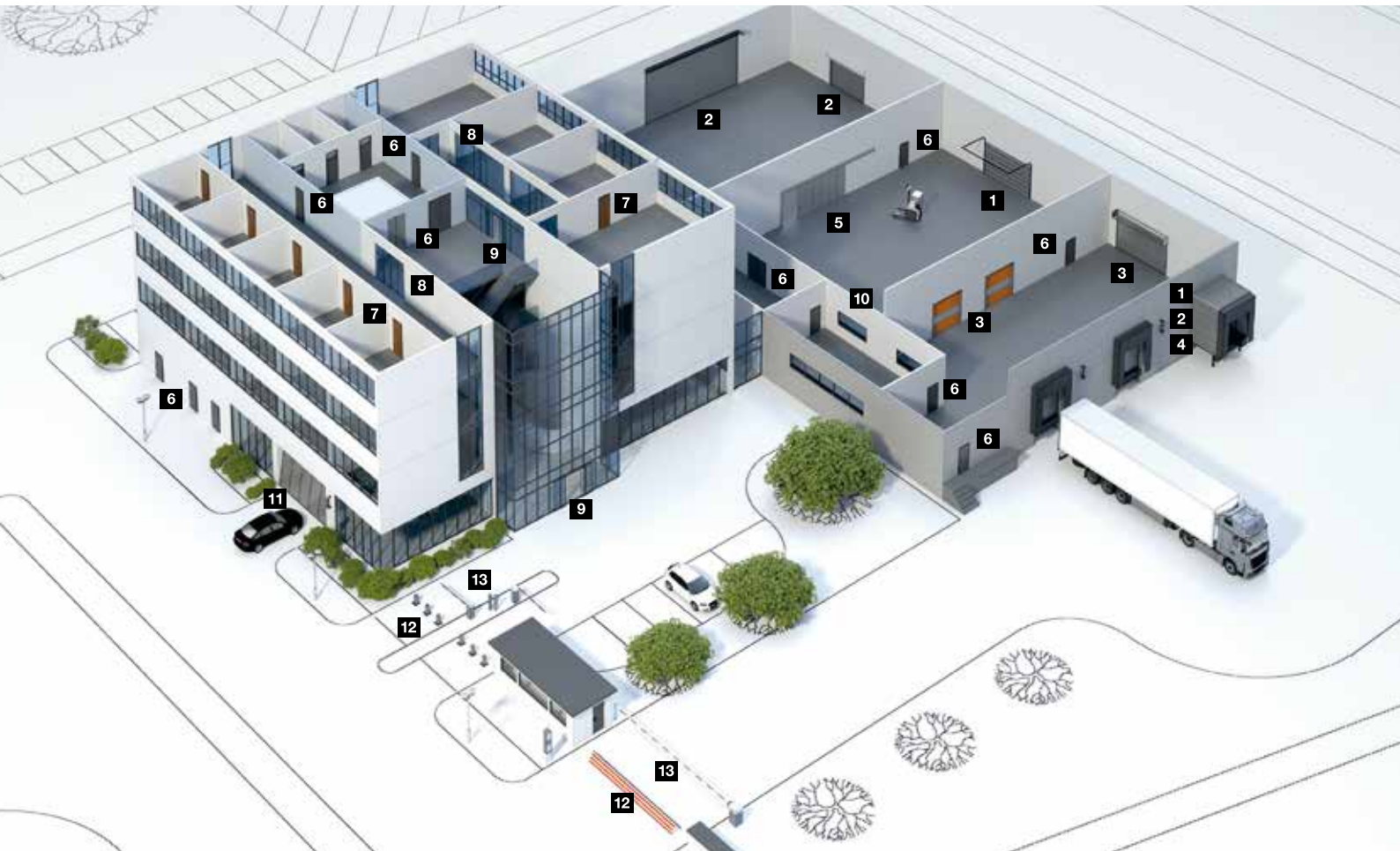
Fitting in front of the reveal
(concrete)

Hörmann Product Range

Everything from a single source for your construction project



Quick service with testing, maintenance and repairs
 Our extensive service network means that we are always nearby and at your service around the clock.



1 Sectional doors



2 Rolling shutters and rolling grilles



3 High-speed doors



4 Loading technology



5 Steel and stainless steel sliding doors



6 Steel and stainless steel construction project doors



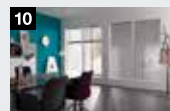
7 Steel frames with high-quality timber function doors from Schörghuber



8 Tubular frame construction project doors



9 Automatic sliding doors



10 Visibility window



11 Collective garage doors



12 Bollards and road blockers



13 Barrier and pay station systems

Hörmann: Quality without Compromise



Hörmann KG Amshausen, Germany



Hörmann KG Antriebstechnik, Germany



Hörmann KG Brandis, Germany



Hörmann KG Brockhagen, Germany



Hörmann KG Dissen, Germany



Hörmann KG Eckelhausen, Germany



Hörmann KG Freisen, Germany



Hörmann KG Ichttershausen, Germany



Hörmann KG Werne, Germany



Hörmann Alkmaar B.V., Netherlands



Hörmann Legnica Sp. z o.o., Poland



Hörmann Beijing, China



Hörmann Tianjin, China



Hörmann LLC, Montgomery IL, USA



Hörmann Flexon LLC, Burgettstown PA, USA



Shakti Hörmann Pvt. Ltd., India

Hörmann is the only manufacturer worldwide that offers you a complete range of all major building products from one source. We manufacture in highly-specialised factories using the latest production technologies. The close-meshed network of sales and service companies throughout Europe, and activities in the USA and Asia, make Hörmann your strong partner for first-class building products, offering “Quality without Compromise”.

GARAGE DOORS
OPERATORS
INDUSTRIAL DOORS
LOADING EQUIPMENT
HINGED DOORS
DOOR FRAMES