



Hörmann Steel Rolling Shutter DD

Innovative technology for heavy-duty applications



Made in Germany

HÖRMANN

Hörmann rolling shutters are engineered in Germany, and assembled in the UAE. It goes without saying that spare parts for shutters, operators and controls are original Hörmann parts that come with a guaranteed availability of 10 years.

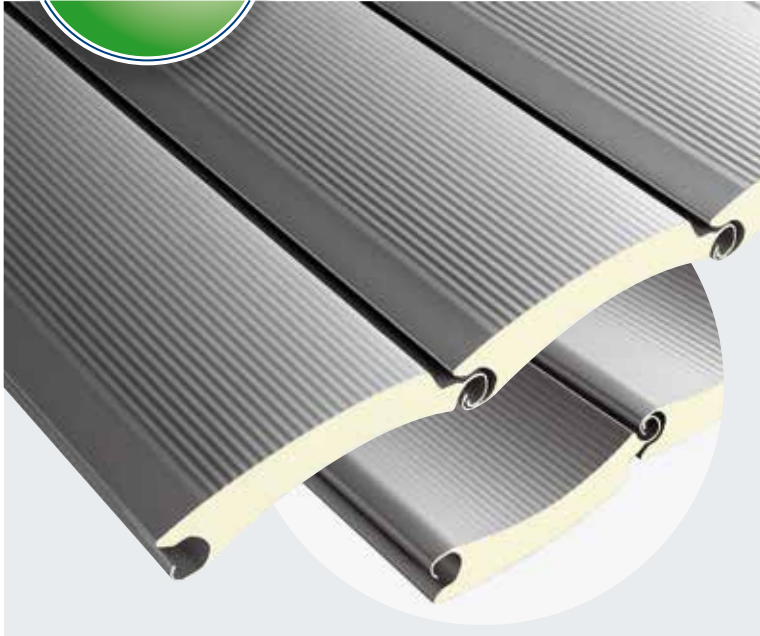


Finest quality rolling shutter construction through know-how and competence

Hörmann has decisively improved its rolling shutters with the Decotherm profile. A combination of a thoroughly optimised profile geometry with a special steel alloy shows what is possible today in rolling shutter construction. All the essential shutter components, such as profiles, side guides,

support brackets, fittings, and control technology are developed and produced by Hörmann - not bought in from here, there and everywhere. All the structural components and equipment for each shutter are calculated on a job-oriented basis.

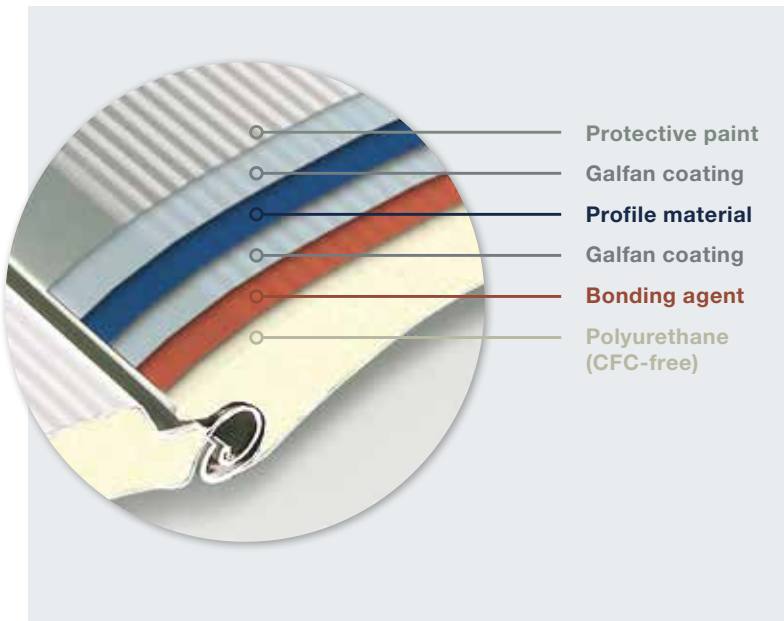
At Hörmann, quality has a system!



Decotherm DD

Innovative profile technology

The concave interior and exterior surfaces of the Decotherm profiles ensure extremely good roll-up action. The inner profile face is identical to the microprofiled outer face; an attractive design that only Hörmann offers. Optimally designed hinges reduce heat loss and enable a connection between the curtain and barrel, without the usual pressure and wear marks.



Surface protection with a system for a permanently good appearance

All Decotherm profiles are coated with a protective paint, which makes them resistant to adverse weather effects. Polyamide particles embedded in the colour coating improve the sliding characteristics of the profiles and thus effectively reduce abrasion and noise.



Warehouses

Low siderooms and lintel fitting coupled with the flexible operator fitting allow for installation even in tight spaces.

Proven technology



Thanks to innovations and continuous further developments, rolling shutter construction at Hörmann has been ahead of its time for years. The performance criteria to the European Standard have been integrated into these developments with convincing results.

It's worthwhile making a comparison!



1

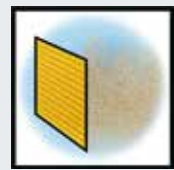
Narrow aluminium side guide

The side guides require a sideroom of only 80 mm for all door sizes **1**. They are fitted quickly and easily directly to the building structure. For better handling during transport and fitting, the side guides are delivered as a 2-part version from a door height of 6000 mm. The support profiles made of aluminium **2** form an elegant unit with side guides. The optional steel bracket fastening **3** allows fitting to insulated building openings or fitting by welding in steel construction.



Stability

Wind lock end pieces, strong shutter profiles and bend-resistant bottom profiles ensure that the roller shutter resists windloads up to class 2.



Compact support brackets

The support brackets only require a sideroom of max. 180 mm (bearing side) or max. 280 mm (operator side).



2



3

Minimum wear guide channel

The standard guide channel with polyamide sliding surfaces **4** reduces wear of the door curtain. In case of maintenance, the metal holder can be replaced in a very service-friendly way.



Easy fitting

The door construction is supplied as a ready-to-fit unit consisting of curtain, barrel and support bracket. The door components can easily be positioned on the building structure using the metre line and console template.

Side guide markings ensure quick adjustment of the door's end-of-travel positions.

The stackable packaging units also optimise transport and logistics to the construction site.

Thermal insulation
A combination of minimizing thermal bridges and use of fine-pored polyurethane rigid foam infill ensures good thermal insulation.



4



Acoustic rated

The curtain as well as the sealing techniques used around the entire shutter help to reduce noise from both outside and inside.



See the fitting video at:
www.hoermann.ae/videos

Rolling Shutter / Rolling Grille DD

More flexibility and simple fitting with the direct drive operator

Powerful operator and control system

This door solution for medium to large openings is characterised by a powerful direct drive operator and variable operator fitting as standard.

Flexible fitting

The fitting position of the operator can be freely selected during fitting and thus optimally adapted to the respective fitting situation on-site.

Optional cladding

An optional curtain and operator cover is available for effective protection against dirt and adverse effects of the weather.

Maximum door sizes

Rolling shutter up to 6000 × 5000 mm





Direct drive operator

- Powerful direct drive operator with absolute encoder (AWG) for a reliable door operation
- Integrated position-independent catch safety device prevents the door curtain from falling
- Variable operator fitting
 - 1 Towards bottom
 - 2 Horizontal
 - 3 Towards top
- With the horizontal or upward alignment, no operator technology is visible underneath the barrel

Curtain and operator cover

- Protection of the door barrel from dirt and adverse effects of the weather with curtain cover PVDD 4
- Trap guard for doors less than 2500 mm high (required according to EN 13241-1)
- Can be extended by the VDD operator cover (closed unit: support brackets, curtain and operator) 5
- Made of galvanized sheet steel
- Quick and easy fitting thanks to fitting to door brackets



Door specifications and options



Window elements

Window elements

In order to use the daylight, you may want to fit window elements. Our double-skinned window elements are made of transparent, impact-resistant polycarbonate with high-quality frames (similar to RAL 9006), covering the polyurethane foam and reducing noise and abrasion.

A perfect concept ensures maximum utility

Hörmann rolling shutters are a practice-orientated, cost-effective concept, geared to a diverse range of operating sequences and a long, reliable service life. All of our operators and controls are installation friendly, ready-to-plug-in individual components.



Controls and operators

Impulse control 445 R (400 V)

- Control and operator can be mounted separately
- Control and door leaf components in protection class IP 65 (hose water protected), connection with a CEE phase-changer plug corresponds to protection class IP 44
- External menu readout via an integral double 7-segment display, so there's no need to remove the housing cover
- Adjustments are no longer made at the motor but can be conveniently carried out from the control unit via digital limit switches
- Service menu with maintenance, cycles and operating hours counter as well as fault/error analysis
- Collective malfunction signalling with on-site individual display (acoustic, optical or, for example, via mobile phone)
- Function blocking via miniature lock (can be converted to profile half-cylinder)



Comfort control 460 R (400 V)

Additional features:

- Second opening height with additional button on the housing cover
- Automatic timer



Direct drive operator

Hörmann rolling shutters come with a direct drive operator that is equipped with an integral safety device.

Specifications and options

Material

Double-skinned steel with polyurethane core

Surface finish

Galvanized with transparent protective paint, optionally available in RAL 9002 grey white

Profile height

109 mm

Profile thickness

20 mm

Curtain weight

Approx. 10 kg/m²

Door width

2250 – 6000 mm

Door height

2250 – 5000 mm

Wind load class 2 up to a door width of 6000 mm

Heat transmission EN 12428 (single profiles) 3.9 W/(m²·K)

Windows

Available

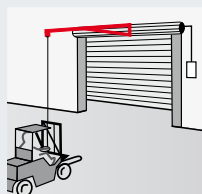
Operator

Direct drive with integral safety device

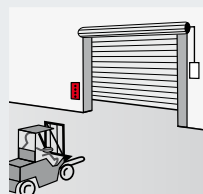
Control

Impulse control 445 R / Comfort control 460 R optional

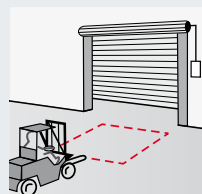
Operating and control options



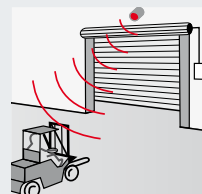
Pull switch



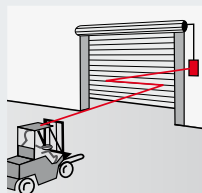
Push-buttons palm switch/mushroom push-button



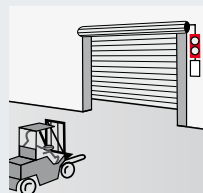
Induction loops



Radar movement detector, Infrared movement and presence detector



Radio remote controls



Signal light, beacon, flashing light



Please refer to our main brochure for further door options and the full range of rolling shutters.

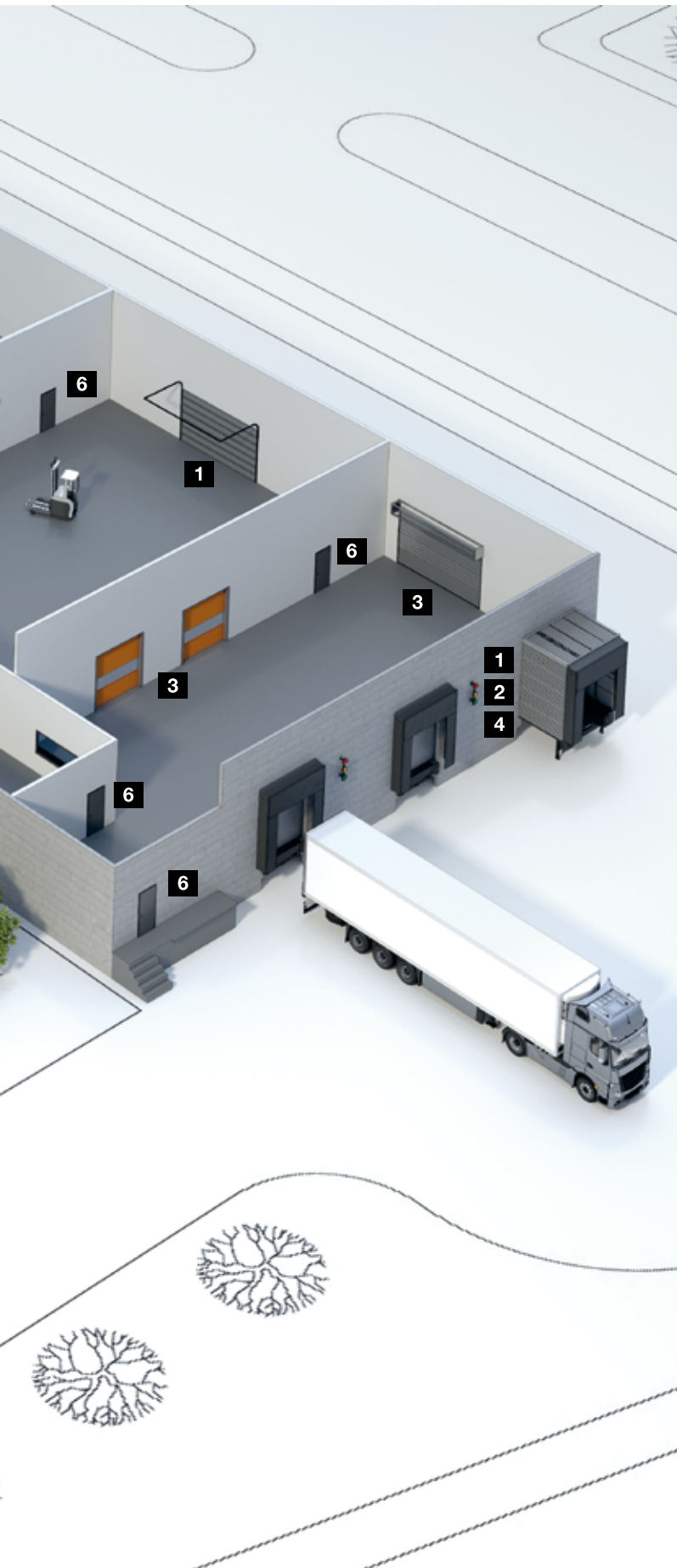
Hörmann Product Range

Everything from a single source for your construction project





Quick service with testing, maintenance and repairs
Our extensive service network means that we are always nearby and at your service around the clock.



Sectional doors



Rolling shutters and rolling grilles



High-speed doors



Loading technology



Steel and stainless steel sliding doors



Steel and stainless steel construction project doors



Steel frames with high-quality timber function doors from Schörghuber



Tubular frame construction project doors



Automatic sliding doors



Visibility window



Collective garage doors



Perimeter Protection Systems



Barrier and pay station systems

Hörmann: Quality without Compromise



Hörmann KG Amshausen, Germany



Hörmann KG Antriebstechnik, Germany



Hörmann KG Brandis, Germany



Hörmann KG Brockhagen, Germany



Hörmann KG Dissen, Germany



Hörmann KG Eckelhausen, Germany



Hörmann KG Freisen, Germany



Hörmann KG Ichttershausen, Germany



Hörmann KG Werne, Germany



Hörmann Alkmaar B.V., Netherlands



Hörmann Legnica Sp. z o.o., Poland



Hörmann Beijing, China



Hörmann Tianjin, China



Hörmann LLC, Montgomery IL, USA



Hörmann Flexon LLC, Burgettstown PA, USA



Shakti Hörmann Ltd., India



Hörmann Middle East & Africa FZE, Dubai, UAE

GARAGE DOORS
OPERATORS
INDUSTRIAL DOORS
LOADING EQUIPMENT
HINGED DOORS
DOOR FRAMES

Hörmann Middle East and Africa FZE
Doors for Home and Industry

Phone +971 4 805 3600
Fax +971 4 880 7699
E-Mail info.dxb@hormann.com
Website www.hormann.ae

Street N406, Plot MO 0203, P. O. Box 262784
Dubai, Jebel Ali Free Zone North
United Arab Emirates

