



# STEEL FRAMES

VarioFix steel case frame in stainless steel version, dismantled into 3 parts





4



14



18



# Content

4 Good reasons to try Hörmann

## 14 Application areas

14 Hotel and residential construction

16 Hospitals and public buildings

## 18 Versions, accessories, technology

18 Colours and surface finishes

20 Hinge systems

21 Lock plates

22 Seals

23 Fitting principles

24 Individual fitting options

26 Technology

IMAGE PAGE 2. Aluminium tubular frame construction project doors with steel frame



# Brand quality made in Germany



The family-owned company Hörmann offers all important construction components for building and renovating projects from a single source. We manufacture in highly specialised factories using state-of-the-art production technologies. Our employees work intensively on new products, continual further developments and improvements to details. The results are patents and unique products on the market.





**WE THINK AND ACT GREEN.** As a family business, we are very conscious of our responsibility to future generations. The Hörmann climate protection strategy aims to reduce and avoid CO<sub>2</sub> emissions. We cover 100% of our electrical power needs at all European production locations with purchased green electricity. We are also investing in a clean future with other measures such as the use of recycled paper, CO<sub>2</sub>-neutral postal shipping and the recycling of transport packaging to save more than 75,000 tons of CO<sub>2</sub> every year. We work with ClimatePartner to offset the emissions that we do generate by supporting certified climate protection projects. In particular, we offset all CO<sub>2</sub> emissions produced in manufacture of products for residential construction as standard. Products for construction projects are also available as CO<sub>2</sub>-neutral versions upon customer request.



You can find further information at  
[www.hoermann.com/sustainability](http://www.hoermann.com/sustainability)



**ClimatePartner**  
**certified product**  
[climate-id.com/FYZNUF](http://climate-id.com/FYZNUF)



CO<sub>2</sub>  
measure  
reduce  
contribute



# Sustainable planning for trend-setting construction

Experienced specialists within our customer-oriented sales organisation accompany you from the planning stage, through technical clarification up to the final building inspection. Complete working documentation, such as technical manuals, is not only available in printed form, but is also always accessible and up-to-date at [www.hoermann.com](http://www.hoermann.com)





**SUSTAINABILITY DOCUMENTED.** Hörmann has already received confirmation of sustainability through an Environmental Product Declaration (EPD) in accordance with ISO 14025 from the Institut für Fenstertechnik (ift – Institute of window technology) in Rosenheim, Germany. This EPD was created based on EN ISO 14025:2011 and EN 15804:2012. In addition, the general guidelines for the preparation of type III Environmental Product Declaration apply. The declaration is based on the PCR document “Doors” PCRTT-1.1:2011.



### **PRODUCT PORTAL FOR ARCHITECTS AND PLANNERS.**

Clearly structured navigation and a search function provide faster access to texts for invitations to tender, technical data, certificates, CAD drawings and much more. In addition, BIM data can be provided for many products for the Building Information Modelling process, enabling efficient planning, drafting, construction and management of buildings. Photos and photo-realistic presentations provide additional information on many products.



**PRODUCTS  
FOR BIM**

We are a member of the professional association for digital building products in the Federal Association of Building Systems e.V.



Texts for invitations to tender, CAD drawings, BIM data and documents for your project can be found at [www.hormann.co.uk/architects-service/architects-programme](http://www.hormann.co.uk/architects-service/architects-programme)



# High-quality processing

State-of-the-art production technology ensures dimensionally accurate frame elements with precise door fittings and functional parts. For all 1-part standard frames, the chamfered area is produced using a laser welding process. This ensures that the individual parts are connected securely and a clean welding seam is formed. This process results in steel frames that stand out due to their appealing design, flush surface as well as long-lasting quality.







**7 preferred  
colours RAL  
to choose**



**Stainless steel  
version**

**PERFECT SURFACE FINISH.** Factory-applied primer coating provides optimum protection of the door frame and is a good basis for further processing. In addition, the high-quality powder coating is characterised by an optimum finish and features high hardness, high elasticity and resistance to impacts, as well as lasting gloss and colour. In addition, the door frames are available in one of 7 preferred colours as well as in RAL to choose or special colours. Door frames made of stainless steel (V2 A / V4 A) are the number one choice when high demands are placed on the resistance of the frame surface to external influences.

→ For further information, see from page 18.



**Easy to fit**

**QUICK AND EASY FITTING.** The sturdy universal trapezoidal anchor for double-shell steel frames with a special hole pattern allows door frames to be fitted into all wall types. Chiselling work on solid walls or recess work on plasterboard is not necessary in the standard sizes. The E50 block frame is just as easy to install in all wall types with plugs through the reveal.

→ For further information, see from page 24.

All frame types are available in stainless steel



Universal trapezoidal anchor for fitting to all wall types



# Steel case frame VarioFix

The VarioFix steel case frame offers high resistance and an elegant shape coupled with the fitting principle of timber frames. With its aesthetic and modern design, the steel case frame is suitable for use in both private and commercial spaces. And thanks to the adjustable decorative rebate, different wall thicknesses can be easily compensated for during renovations or new construction projects.







### **PARTICULARLY LONG-LASTING.**

Thanks to the high-quality coating, the VarioFix steel case frame can withstand run-ins with toy cars or vacuum cleaners, and any damage to the surface is easy to repair. Even cleaning with water or a thorough washing cannot damage the door frame.



**HIGH-QUALITY DESIGN.** For the VarioFix steel case frame, the corner joints feature high-quality welding and a flush polish, meaning there are no visible chamfered cuts in the frame corners. In flush-closing doors, the robust construction guarantees a uniform gap dimension, as the door frame can no longer warp after fitting.



**FAST FITTING.** The VarioFix steel case frame not only looks like a timber frame, it's also fitted like one, but up to 50% faster and easier. Instead of gluing and bolting the riser and cladding separately, as is the case with a timber frame, with the VarioFix, the rebate shell and the rebate counter shell are plugged together in the opening.

→ Further information can be found starting on page 26.

# Custom frames for individual solutions

The steel frames can be optionally equipped with special hinge systems and seals as well as a range of special equipment for greater convenience and security. They can be used for either flush-closing or rebated door leaves made of timber, glass or steel. All versions are suitable for fitting to brickwork, concrete, gas concrete, gypsum boards and partition walls.







Glass door with steel frame



**NEW from March 2025.** Sliding door frame with glass loft door running within the wall

**FRAME WITHOUT FACE.** The frame without face (illustration on the left) is the design solution for modern interior architecture. The combination of a narrow frame face, integrated door closer and concealed hinges creates a minimalist door view.

**EXCLUSIVE GLASS DOORS.** The elegant solution for glass doors features a flush-fitting view of the frame face, glass door leaf as well as a hinge and locking system. This creates maximum transparency and an exclusive door view.

**SPACE-SAVING SLIDING DOORS.** Sliding doors are the ideal solution for an exclusive design, running in front of and in the wall and where every square metre counts. The sliding door fitting is long-lasting and moves very easily. Optionally available with a lintel damper on one or both sides and with an operator unit.

→ For further information on hinge systems, seals and equipment, see from page 20.

**HOTELS.** Passages and doors in hotels and B&Bs must withstand the greatest strains. Architectural demands also require individual designs and colours. The steel frames that can be painted with a primer coating and the door frames with a high-quality powder coating fulfil these requirements perfectly and are also maintenance-free and durable.



LEFT. Steel frames with high-quality fire-rated doors



TOP RIGHT. VarioFix steel case frame with flush-closing timber door



BOTTOM RIGHT. Frame without face with flush-closing timber door





**RESIDENTIAL CONSTRUCTION.** Steel frames are long-lasting, timeless and modern design elements for residential construction. Steel frames with high-quality powder coating look like timber frames. The welded and flush polished corner joints mean that there are no visible chamfered cuts. With its narrow frame face, the frame without face can be incorporated harmoniously into modern living concepts. With concealed hinges or filigreed guide rollers, it also meets the highest design demands.

**HOSPITALS.** Door frames made of steel are the right solution for diverse, demanding tasks in hospitals. For example, thanks to a larger opening width, door frames with a chamfered reveal make it easier to move beds through door openings. Hörmann steel and stainless steel frames meet the efficiency, cleanliness and hygiene requirements found in an everyday clinic environment.

TOP. Steel profile frame

BOTTOM LEFT AND BOTTOM RIGHT.  
VarioFix steel case frame with steel  
internal door and transom light







**PUBLIC BUILDINGS.** Hörmann has the right door frames for heavily frequented office areas, schools and nurseries and place high demands on robustness and security. Additional side elements and transom lights ensure bright rooms.

# Colours and surface finishes

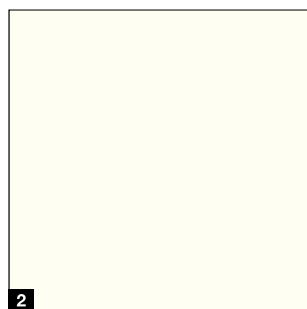
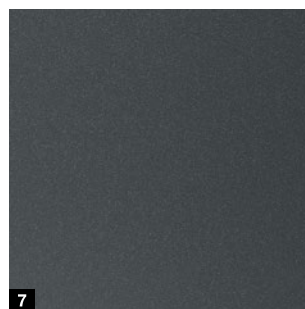
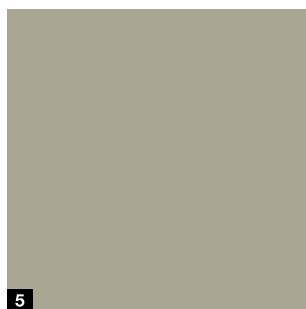
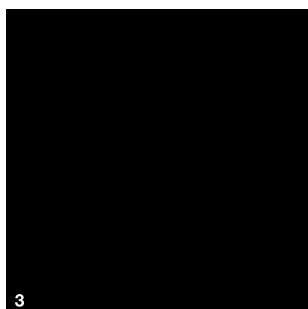
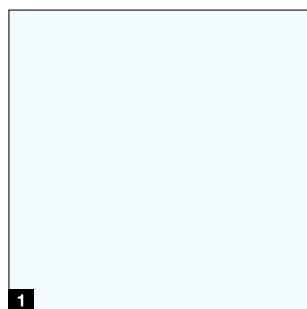
According to your requirements

---

## Preferred colours with high-quality powder coating

The door frames are available in galvanized steel or stainless steel. All steel frames receive a primer coating as corrosion protection. We offer the optional high-quality powder coating not only in all RAL shades, but also in special colours.

Our popular preferred colours are particularly affordable:



Stainless steel surface





---

**Preferred colours with high-quality powder coating**

- 1** RAL 9016 Traffic white
- 2** RAL 9010 Pure white
- 3** RAL 9005 Jet black
- 4** RAL 9006 White aluminium
- 5** RAL 7035 Light grey
- 6** RAL 7016 Anthracite grey
- 7** CH 703 Anthracite

**Stainless steel surface**

- 8** Polished finish, K240

**Safe transport packaging**

All steel frames with high-quality powder coating are always delivered in sturdy transport packaging. This consists of cardboard **9** or bubble wrap for individual door frames. Several door frames are transported lying on pallets.

Screw and play door frames in primer coating are delivered wrapped in plastic film or optionally in a sturdy and stackable cardboard box **10**.



# Hinge systems

For door leaf weights up to 120 kg

## 1 VX 7939 / 120

Loading capacity up to 120 kg\*

## 2 V 8130

Loading capacity up to 60 kg\*

## 3 V 8037 WF

Loading capacity up to 70 kg\*

## 4 NEW from March 2025. Inclino 3D

Loading capacity up to 70 kg

## 5 Concealed hinge

Depending on the version, loading capacity from 40 to 180 kg

## 6 VN 2927 / 160 Compact Planum (frame without face)

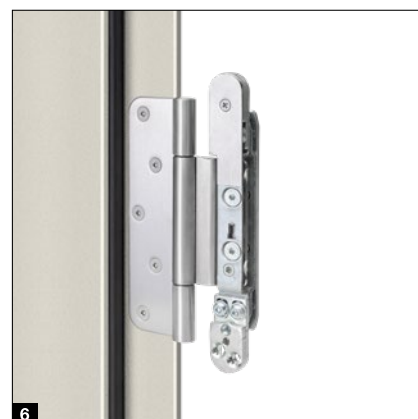
Loading capacity up to 160 kg

## 7 Concealed Euro hinge 3-way AN

Loading capacity up to 60 kg\*

## 8 Roundstyle VR 120

Loading capacity up to 100 kg



\* Load values: Maximum door leaf weight, taking the load factors into account with a door leaf size of 1000 mm × 2000 mm and using two hinges at a distance of 1435 mm.

# Lock plates

For comfortable closing

## 1 Plastic latch protection plate

Flush

## 2 V2A flat lock plate

Rebated

## 3 V2A flat lock plate

With latch adjustment, rebated

## 4 V2A latch lock plate

Rebated for glass doors

## 5 V2A flat lock plate

Flush

## 6 V2A flat lock plate

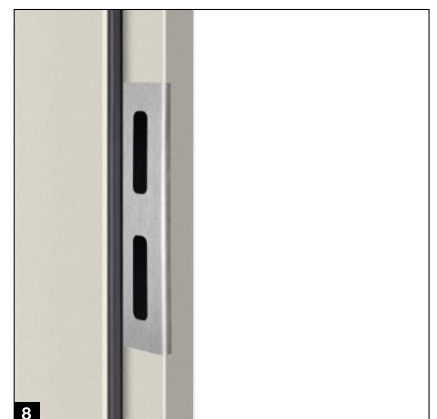
With latch adjustment, flush

## 7 VA latch protection plate

Rebated

## 8 VA latch protection plate

Flush





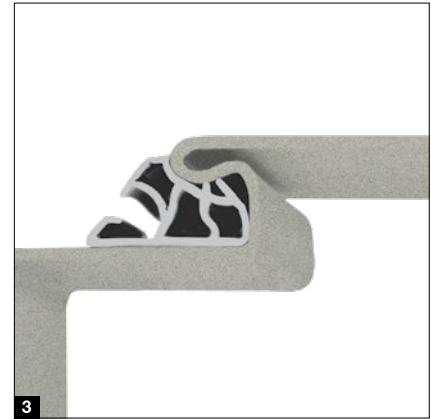
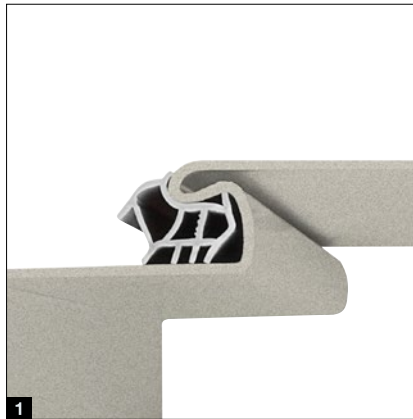
# Seals

For virtually silent closing

Thanks to the special shape of the groove, the high-quality, permanently elastic hollow chamber seals can be easily inserted and are firmly fixed in place. They ensure that doors close snugly with hardly a sound. The standard seal is available in grey, white and black.

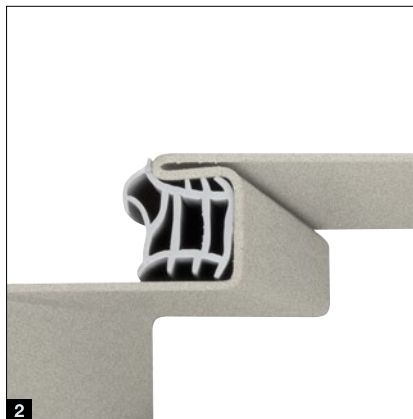
## **1 Standard UPVC seal**

Optional: plasticiser-free TPE seal



## **2 PVC seal**

For 20 mm rebate width



## **3 Special seal**

For greater acoustic insulation (42 dB instead of 35 dB) for all frame types

## **1 1-part door frames**

Welded in the chamfered area and polished for solid walls, dry construction walls and fitting at the time of wall construction

## **2 Double-shell door frames**

Invisibly separated in the lining groove for renovations and retrofitting to solid walls and dry construction walls

## **3 3-part door frames**

### **or 6-part door frames**

Separated in the chamfered area and with installation-friendly packaging, for plugging together and screw fitting to solid walls and dry construction walls



# Individual fitting options

Brickwork and door frames for partition walls

## Corner frame

1 Fitting with nail / plug anchor

2 Fitting with 2C fitting foam, for retrofitting, 1-part

## Profile frames

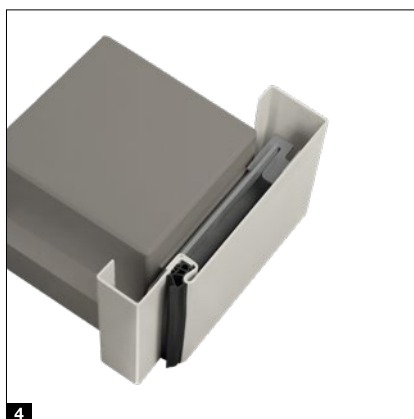
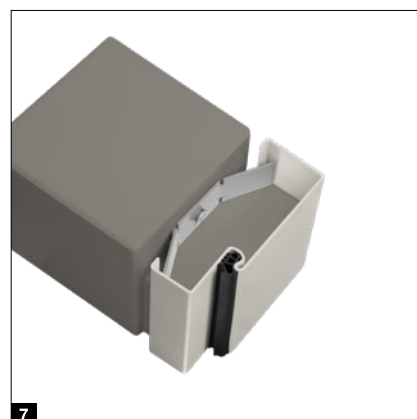
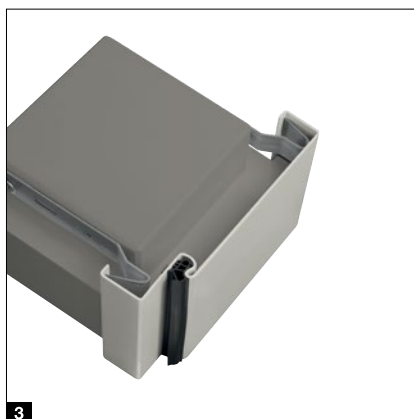
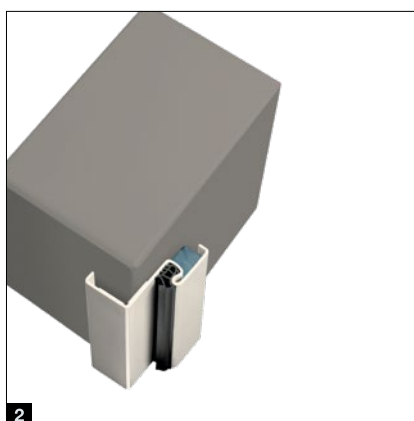
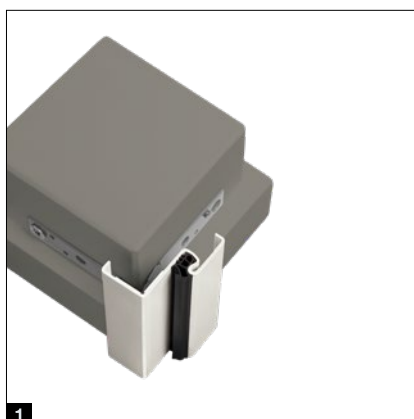
3 Fitting with quick anchor

4 Fitting with trapezoidal anchor, double-shell for retrofitting

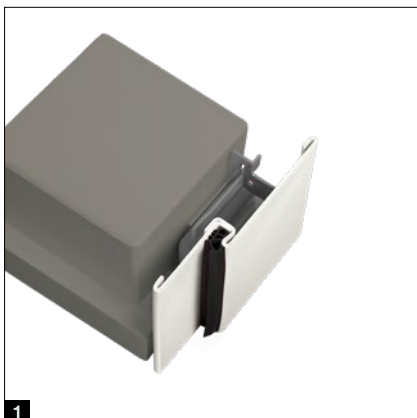
5 Plug-and-screw fitting and recessed drill holes in the reveal

6 Plug-and-screw fitting through the reveal with hole and cover cap

7 Fitting with propeller anchor







1



5

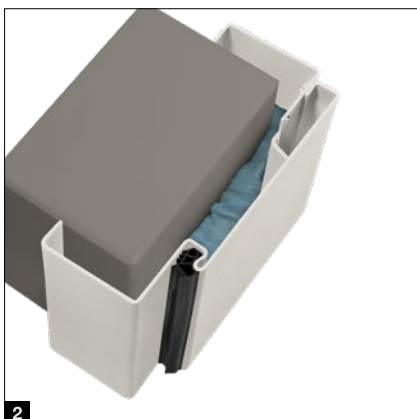
## Frame without face with small viewed width

1 Fitting with trapezoidal anchor

## Steel case frame VarioFix

2 Fitting with 2C fitting foam,  
double-shell for retrofitting

3 Foam-free fitting with universal  
adapter and fixing accessories  
bottom section



2



6

## Profile frames

4 Fitting with grouting lugs

5 Fitting with trapezoidal anchor,  
double-shell for retrofitting

6 Fitting with recessed drill holes  
through the frame face



3



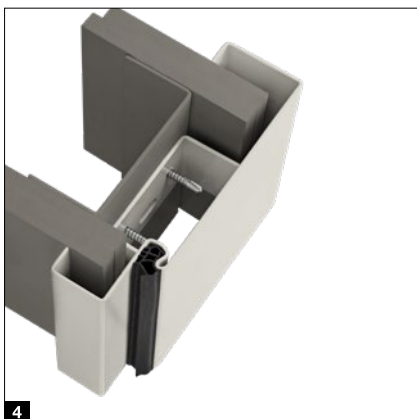
7

## Frame without face with small viewed width

7 Fitting with trapezoidal anchor

## Block frame

8 Fitting with countersunk recessed  
drill hole in the rebate (groove)



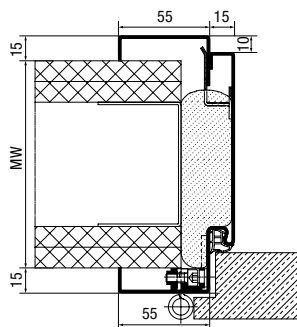
4



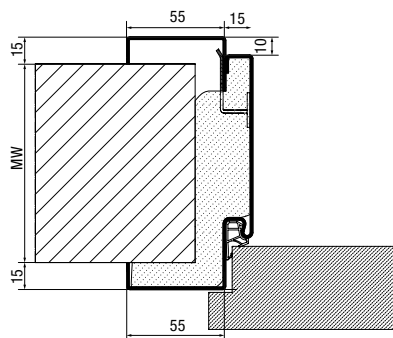
8

# Technology

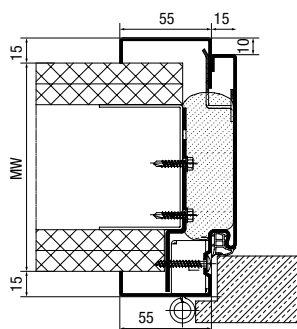
## Steel case frame VarioFix



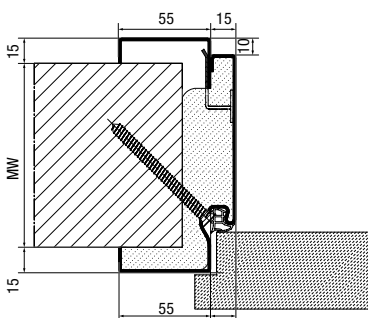
Fitting in partition walls, rebated without adapter, foamed



Fitting in brickwork, rebated without adapter, foamed



Fitting in partition walls, rebated with adapter (door leaf weight up to 80 kg)



Fitting in brickwork, diagonal fixing (countersunk hole in the groove), rebated, for Hörmann internal doors with RC 2 / RC 3 security features

### Standard sizes

Nominal size	
Width	Height
625	2000
750	2000
875	2000
1000	2000
625	2125
750	2125
875	2125
1000	2125

### Wall thickness compensation

Wall widths MW	Adjustable range
100	95 – 115
125	120 – 140
150	145 – 165
175	170 – 190
205	200 – 220
270	265 – 285

All details in mm, nominal size = ordering size

### Fitting methods for different door leaf weights

Maximum door leaf weight	Type of fitting	Application areas
50 kg	2KPU = 2C fitting foam made of polyurethane, UAD = universal adapter, DBF = diagonal fixing	
	<b>VarioFix 2KPU 50</b> <ul style="list-style-type: none"> <li>Foamed in places, at least 50%</li> </ul>	For internal doors without requirements
	<b>VarioFix 2KPU 80</b> <ul style="list-style-type: none"> <li>100% foamed</li> <li>Pressure-resistant backfill recommended</li> </ul>	For interior and apartment entrance doors without requirements
80 kg	<b>VarioFix UAD 80</b> <ul style="list-style-type: none"> <li>3 universal adapters and 3 countersunk recessed drill holes in the rebate</li> <li>Foamed in places, at least 50%</li> <li>Partition wall fitting set A6 or brickwork fitting set B6 recommended</li> </ul>	For interior and apartment entrance doors without requirements
	<b>VarioFix foam-free 80</b> <ul style="list-style-type: none"> <li>6 universal adapters and 6 countersunk recessed drill holes in the rebate</li> <li>Fixing and clamping plate in the bottom section and fixing accessories for VarioFix foam-free</li> <li>2 fitting sets each recommended for partition wall A6 or brickwork B6</li> <li>Particularly environmentally friendly</li> </ul>	For interior and apartment entrance doors without requirements
120 kg	<b>VarioFix UAD 120</b> <ul style="list-style-type: none"> <li>6 universal adapters and 6 countersunk recessed drill holes in the rebate</li> <li>100% foamed</li> <li>Pressure-resistant backfill recommended (on site)</li> <li>2 fitting sets each recommended for partition wall A6 or brickwork B6</li> </ul>	For internal or apartment entrance doors with and without requirements and door leaf widths from 1000 mm to 1250 mm
	<b>VarioFix DBF 120</b> <ul style="list-style-type: none"> <li>Diagonal fixing thanks to 6 countersunk recessed drill holes in the rebate</li> <li>100% foamed</li> <li>Pressure-resistant backfill recommended (on site)</li> <li>Brickwork fitting set C6 recommended</li> </ul>	For internal or apartment entrance doors with and without requirements and door leaf widths from 1000 mm to 1250 mm, <b>not suitable for vertically perforated bricks or partition walls</b>

This table applies to all wall types, taking into account appropriate hinge systems and preparations.



**Rebated door leaves**



**Flush door leaves**



**NEW. Stainless steel version**



**50% faster fitting**



**Available in max. 6 working days**

### Perfectly aligned

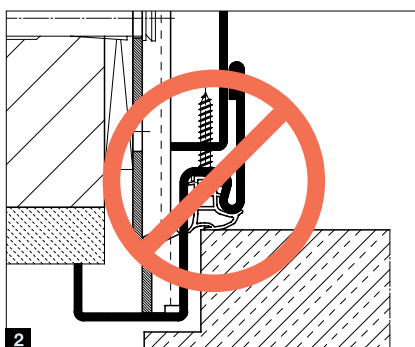
The VarioFix steel case frame with a 55 mm frame face on both sides harmonises perfectly with other timber frames. The frame is available in RAL 9016 to match the Hörmann residential internal doors with Duradecor surface finish. For a very harmonious frame view, we offer you the version with a white seal as standard **1**. The VarioFix steel case frame can be used with flush or rebated door leaves and can be supplied with concealed hinges and with an elegant stainless steel lock plate on request. As a less expensive alternative, a surface finish in primer coating with spot-welded chamfered corners is also available. The door frame is designed for use with glass, timber and steel door leaves.

### Simple fitting

The VarioFix steel case frame can be fitted to all wall types without screw fitting, using the new Hörmann 2C fitting foam, like a timber frame. This results in a time saving of up to 50% during fitting. In contrast to conventional steel frames, for the VarioFix steel case frame the wall width adjustment is not made in the area visible from outside. This way, an additional unattractive foldback is avoided **2**. With adjustment in the decorative rebate, it compensates for wall tolerances of up to 20 mm (–5 to +15 mm). The screw and play version **3** can not only be quickly fitted, but can also be conveniently transported to save space.

### Fast delivery times

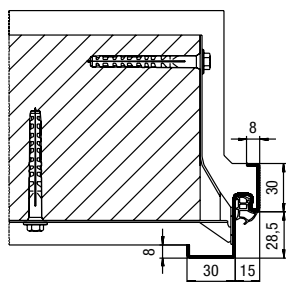
The VarioFix steel case frame in the version with primer coating and high-quality powder coating in Traffic white RAL 9016 can be delivered in 48 standard sizes and 6 wall widths within a maximum of 6 working days or collected from the factory at any time. The wall widths 100, 125, 150, 175, 205 and 270 mm are adjusted to fitting in partition walls or brickwork.



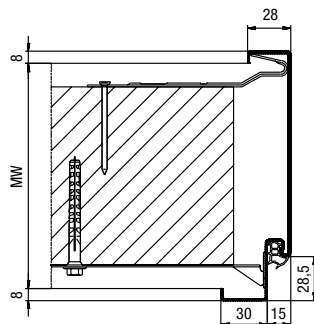


# Technology

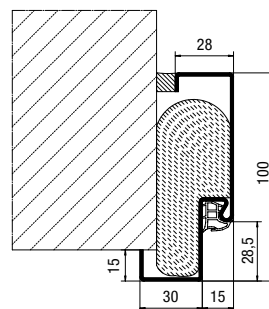
## Standard sizes, corner and profile frames



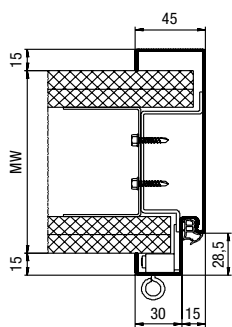
Corner frame for brickwork



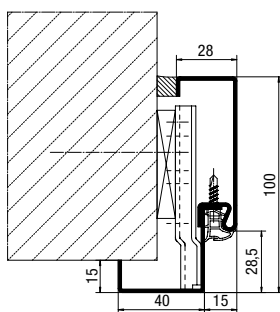
1-part profile frame for brickwork



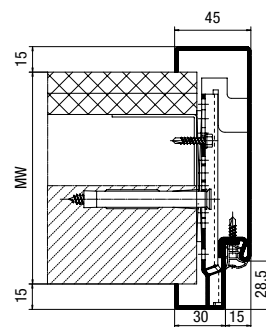
1-part corner frame for retrofitting  
in all wall types



1-part profile frame for partition walls



Double-shell corner frame for retrofitting  
in all wall types

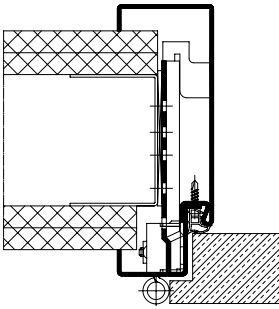


Double-shell profile frame for all wall types

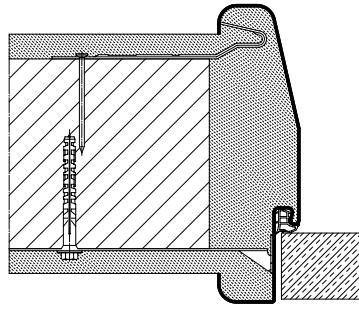
## Corner and profile frames

Nominal size	Frame hold dimension	Clear frame dimension
Width x height	Width x height	Width x height
625 x 2000	591 x 1983	561 x 1968
750 x 2000	716 x 1983	686 x 1968
875 x 2000	841 x 1983	811 x 1968
1000 x 2000	966 x 1983	936 x 1968
625 x 2125	591 x 2108	561 x 2093
750 x 2125	716 x 2108	686 x 2093
875 x 2125	841 x 2108	811 x 2093
1000 x 2125	966 x 2108	936 x 2093

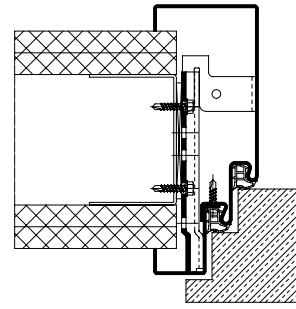
All details in mm, nominal size = ordering size



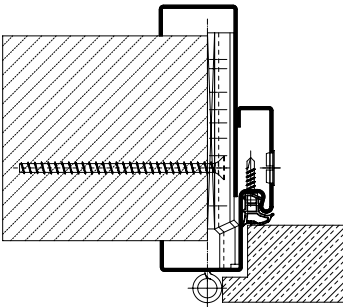
Double-shell frame without wall width adjustment, rebated



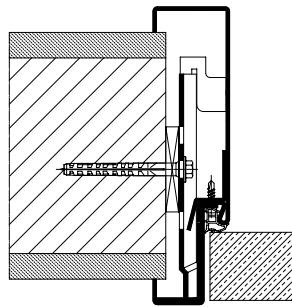
1-part brickwork frame brickwork reveal and radii, flush



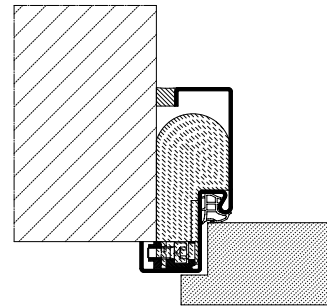
Double-shell frame with double rebate, rebated



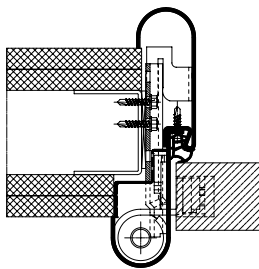
Double-shell telescopic frame with wall width adjustment, rebated



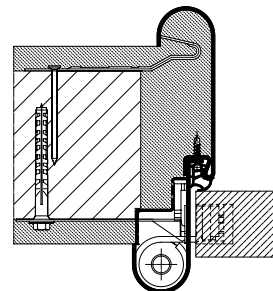
Double-shell frame with lead insert, flush



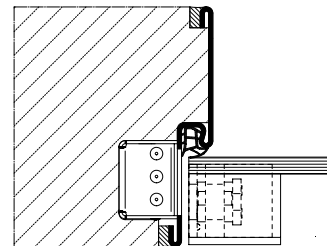
1-part corner frame without anchor for retrofitting, rebated



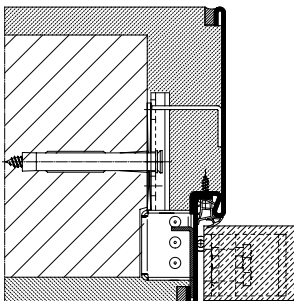
Double-shell frame, "Roundstyle", flush for partition wall with finger trap protection on the hinge side



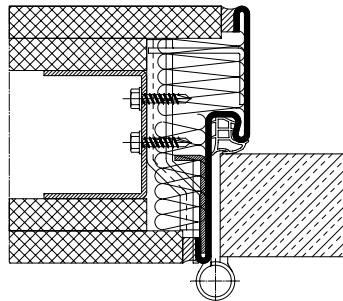
Double-shell frame, "Roundstyle", flush for brickwork with finger trap protection on the hinge side



1-part frame without face, flush, glass door hinge



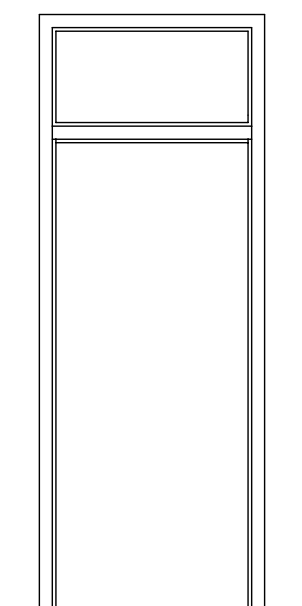
Double-shell frame without face, flush, for brickwork, concealed hinge



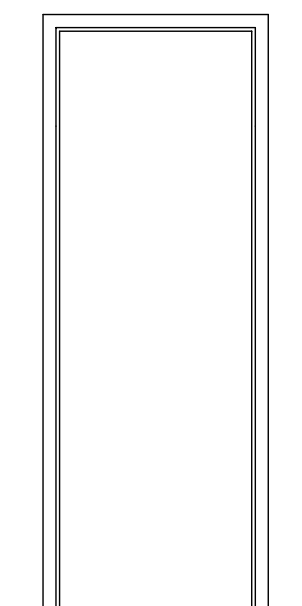
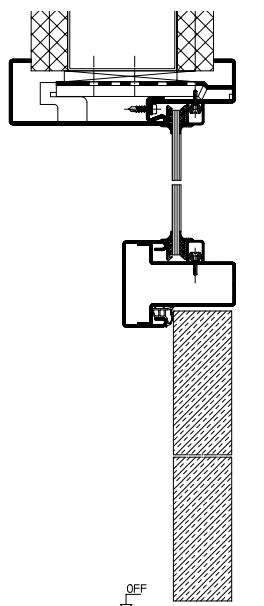
1-part frame without face, flush, for partition walls, hinge system VN 2927 / 160 Compact Planum

# Technology

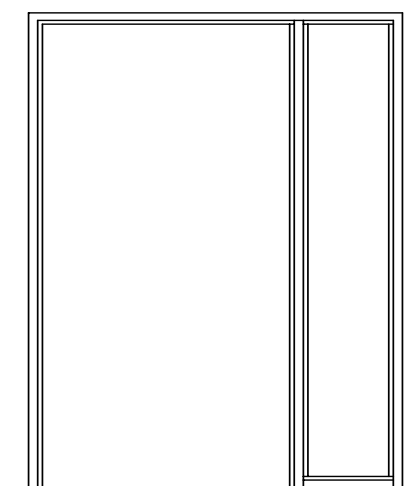
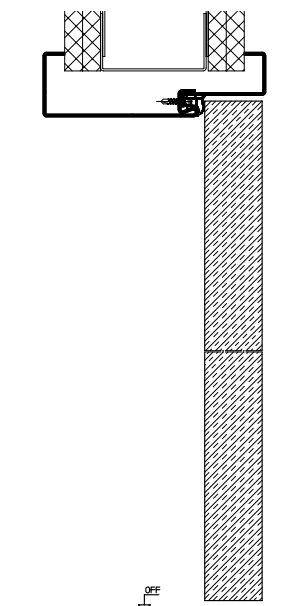
Room-high door frames, side elements, transom lights



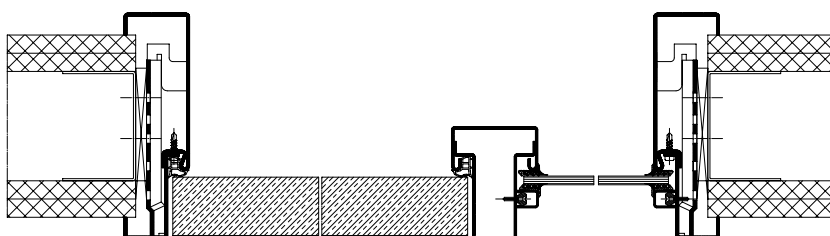
Profile frame with transom light



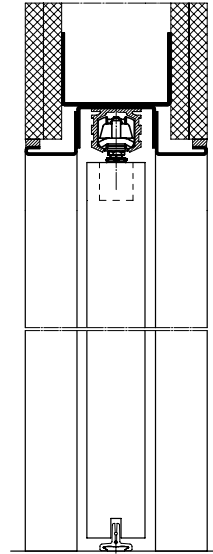
Room-high profile frame optionally prepared for panel



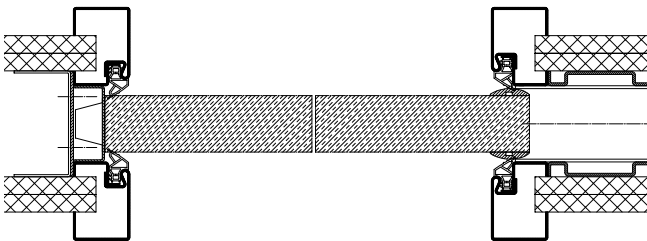
Profile frame with side element



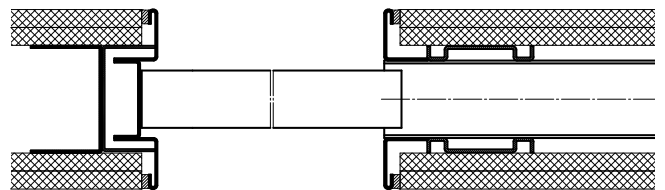




Sliding door frame without face, box design without panel



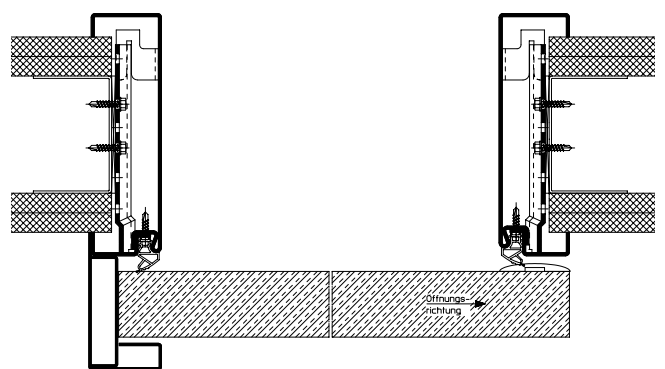
Sliding door frame running within the wall, sealed



Sliding door frame without face, running within the wall



VarioFix sliding door frame running in front of the wall



Sliding door frame running in front of the wall, sealed

# Hörmann. For Life.

Thanks to their superior quality, Hörmann products ensure that residential and industrial buildings as well as construction projects function sustainably, reliably and economically. They are a crucial part of your building – and will remain so over the long term.

**INDUSTRIAL DOORS. LOADING TECHNOLOGY.  
SLIDING DOORS. CONSTRUCTION PROJECT  
DOORS. PERIMETER PROTECTION SYSTEMS.**



Some of the products shown feature special equipment and do not always correspond to the standard versions. The surface finishes and colours shown are subject to the limitations of the printing process and cannot be regarded as binding. All RAL colours are based on the RAL colour chart. All rights reserved. No part may be reproduced without our prior permission. Subject to changes.

**HÖRMANN**